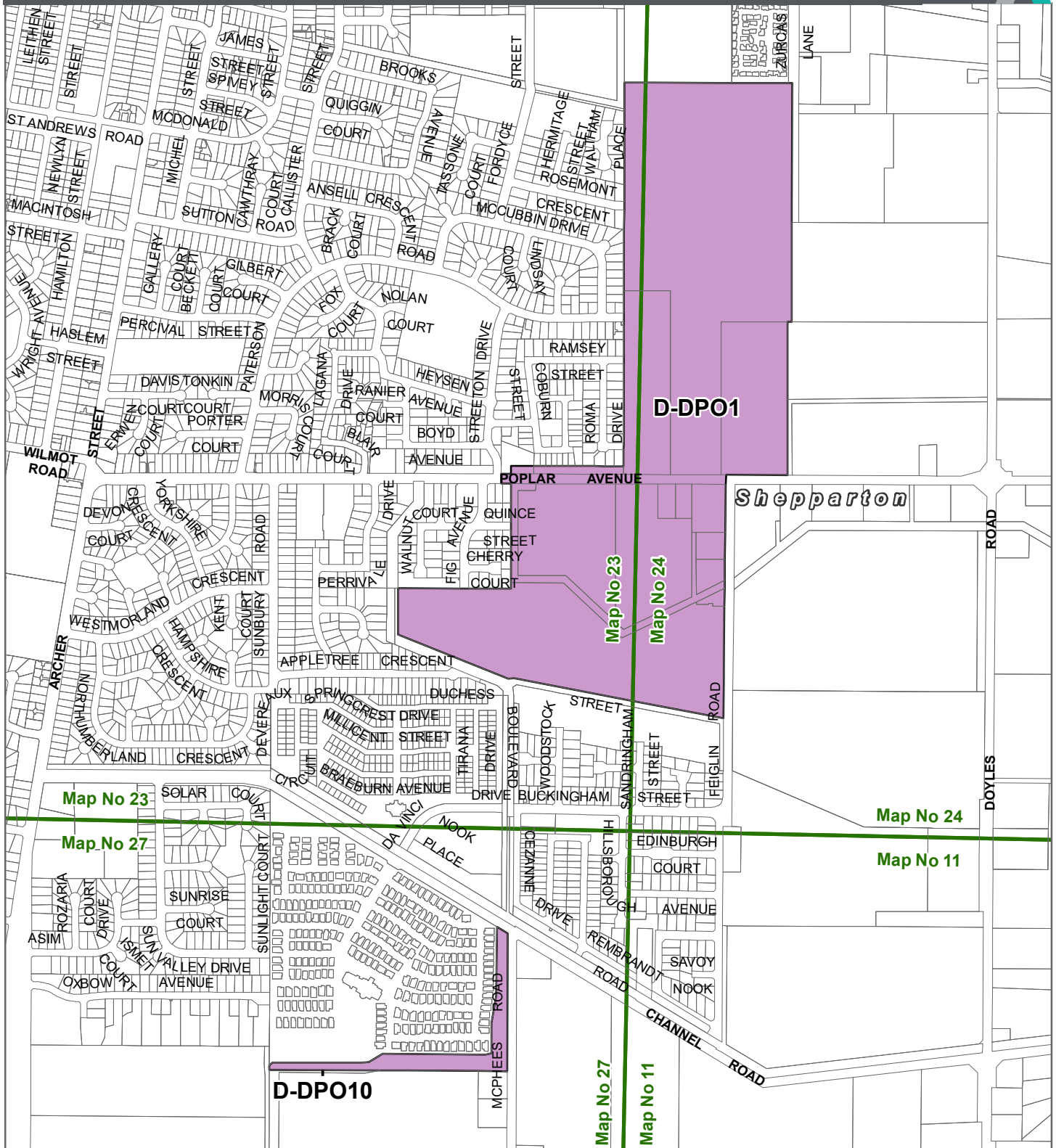


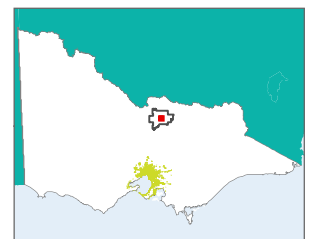


# GREATER SHEPPARTON PLANNING SCHEME - LOCAL PROVISION AMENDMENT C117gshe



## LEGEND

-  D-DPO - Area to be deleted from a Development Plan Overlay
-  Local Government Area



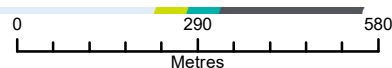
Part of Planning Scheme Maps 23DPO, 24DPO & 27DPO

## Disclaimer

This publication may be of assistance to you but the State of Victoria and its employees do not guarantee that the publication is without flaw of any kind or is wholly appropriate for your particular purposes and therefore disclaims all liability for any error, loss or other consequence which may arise from you relying on any information in this publication.

© The State of Victoria Department of Transport and Planning 2023

Planning Group  
Print Date: 07/08/2023  
Amendment Version: 3



**VICTORIA**  
State Government

Department of Transport and Planning