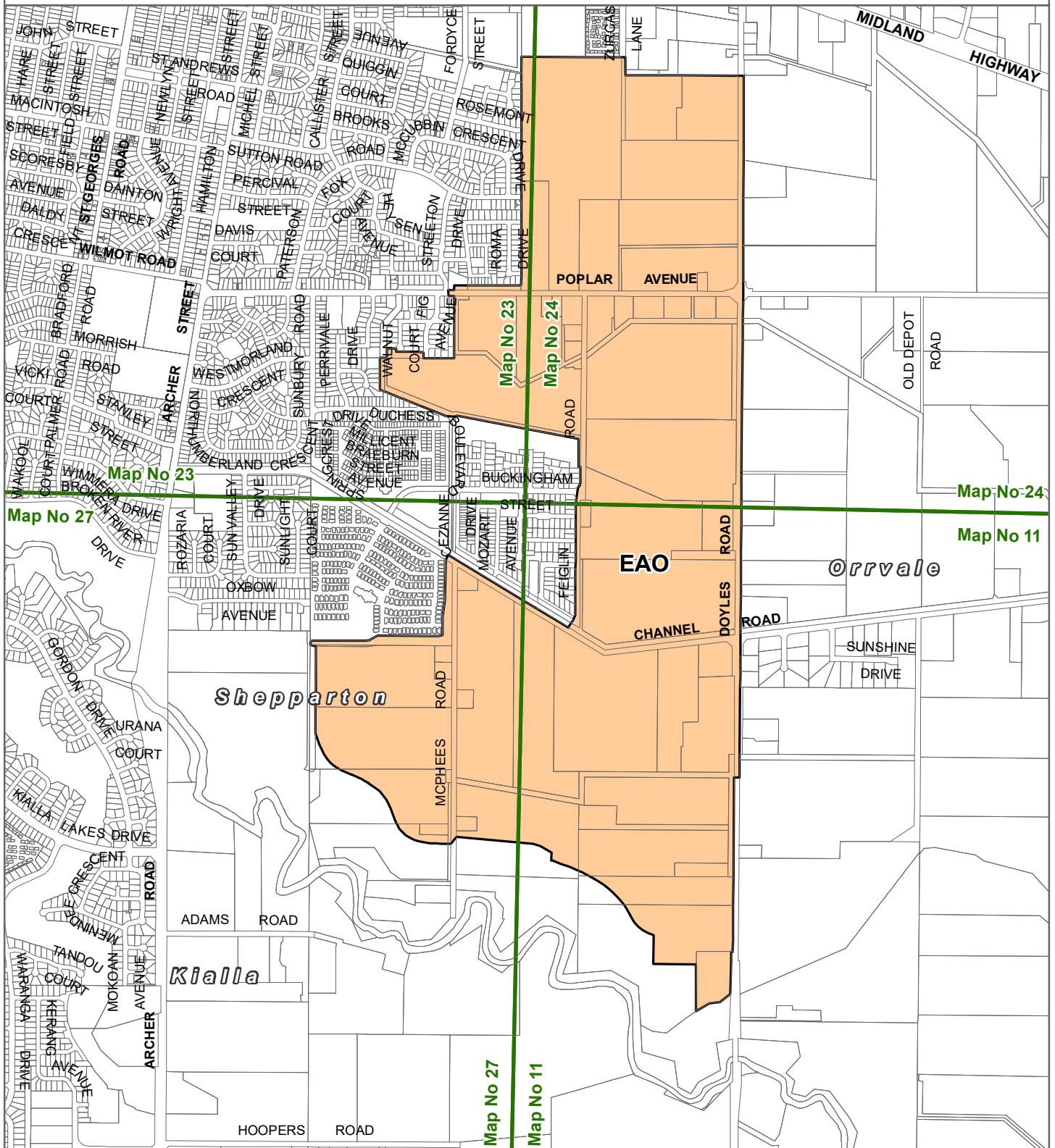




GREATER SHEPPARTON PLANNING SCHEME - LOCAL PROVISION

AMENDMENT C117gshe



LEGEND

-  EAO - Environmental Audit Overlay
-  Local Government Area



Part of Planning Scheme Maps 11EAO, 23EAO, 24EAO & 27EAO

Disclaimer

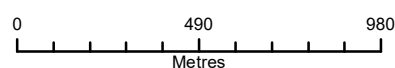
This publication may be of assistance to you but the State of Victoria and its employees do not guarantee that the publication is without flaw of any kind or is wholly appropriate for your particular purposes and therefore disclaims all liability for any error, loss or other consequence which may arise from you relying on any information in this publication.

© The State of Victoria Department of Environment, Land, Water and Planning 2022

Planning Group

Print Date: 07/12/2022

Amendment Version: 2



Environment,
Land, Water
and Planning