

In reply please quote:

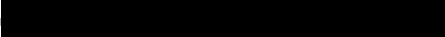
D20/110193


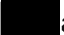
Mr S Moseley
Chief Executive Officer
Victorian Planning Authority
Level 25 35 Collins Street
MELBOURNE VIC 3000

Dear Mr Moseley

RE: Public Consultation on the Bannockburn Growth Plan and Draft Amendment to the Golden Plains Planning Scheme

Thank you for the opportunity to offer comment on the Bannockburn Growth Plan.

 has reviewed the future demand for Catholic education based on the population data provided for the Bannockburn Growth Area. We provide the following comments:

1. A new Catholic primary school is required for the Bannockburn growth area. Estimated demand in the range of 468 to 474 primary student places, based on a 16% and 18% sector share respectively, will be generated from the proposed residential subdivision of land in the growth area.
2. The proposed new school will support the existing school of St Mary MacKillop, anticipated to grow to 325 enrolments over the next 12 months, with capacity to increase to 500 students in the longer term.
3.  requests the designation of a 3 hectare site for a non-government primary school and ancillary Early Learning Centre in a suitable location within the growth area.
4.  advises that a secondary school is not required within Bannockburn.

I attach the data analysis that supports the Catholic education demand calculated from this growth area.

If you require any further information, please contact 


Yours sincerely



Bannockburn Growth Plan - Assessment of Catholic Primary School Demand

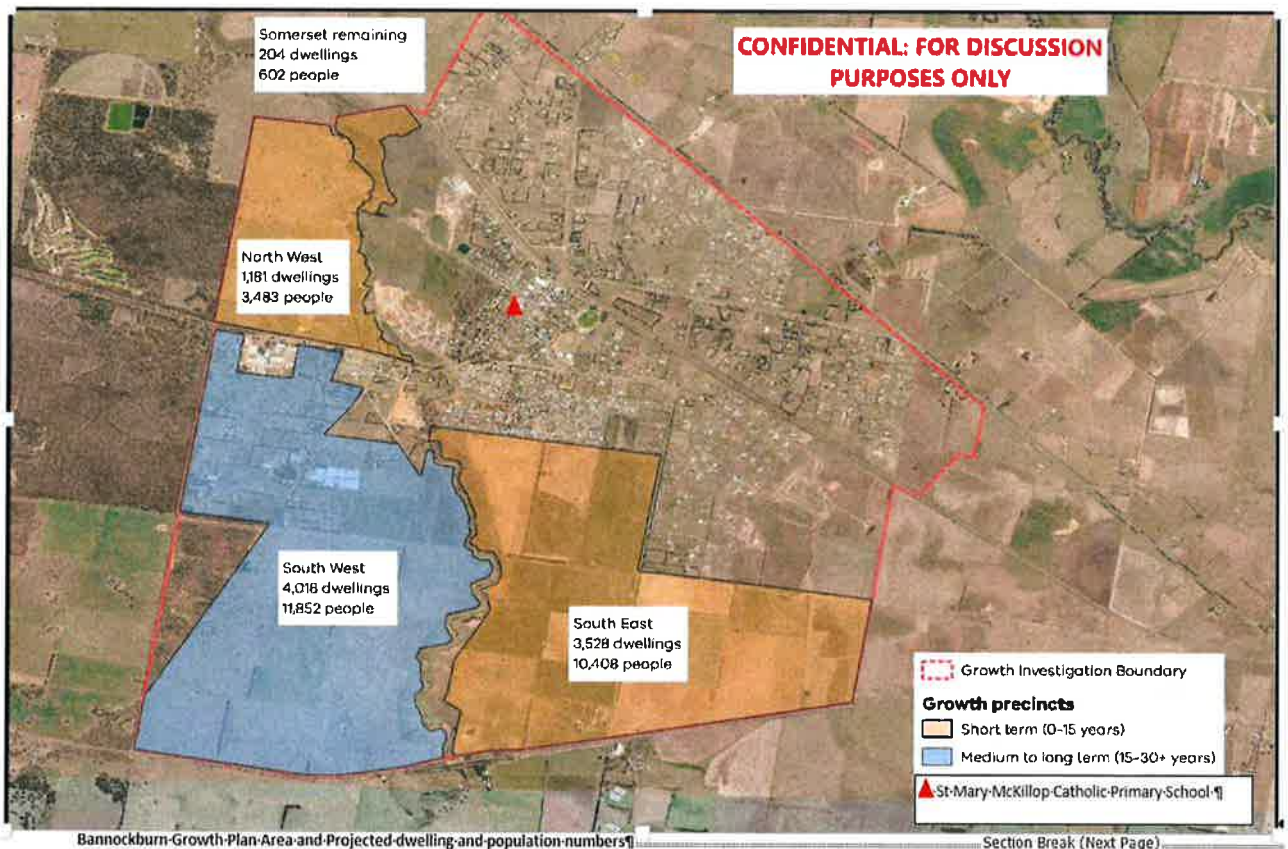
Objective

Determine the potential dwelling yield and total population to derive the student population for the Bannockburn Growth Plan Area.

Summary of Findings

Demand for Catholic primary school enrolments at Full Development for the additional population growth anticipated for the growth area alone is 474 Catholic primary school students and 450 Catholic secondary school students

The Bannockburn Growth Area



The Bannockburn Growth Area in Context of Surrounding Catholic schools



The School (Former P66 now E1407) in the context of existing and future Catholic schools - Geelong Region Source: Future Schools Map November 2019

Assumptions

The assessment considers the demand generated by the Growth areas in addition to the demand met by the existing Catholic primary school accommodated in High Street, Bannockburn.

Total population based on occupancy rates of 2.9 persons per household.

Approach

Establish the overall demand for Catholic primary education for the Bannockburn Growth Area based on an occupancy rate of 2.9 person occupancy per household (VPA rate).

$$\text{Total population} * (11%) * (16\%) =$$

Where 11% represents that share of the population that is 5 to 11 years old and 16% represents the sector share in the Parish of Meredith. Refer to table on next page.

Area	Number of dwellings	Number of people based on CEM rate of <u>2.9 persons per household</u>
Somerset	204	602
North West	1,181	3,483
South West	4,018	11,852
South East	3,528	10,408
TOTAL	8,931	26,345

Bannockburn	Dwellings	Population	Dwelling occupancy	5 to 11 years	12 to 17 years	11% Catholic	10% Catholic	16% Catholic	16% Catholic
Somerset	204	602	2.95	67	67	11	11	11	11
North West	1,181	3,483	2.95	387	387	62	62	62	62
South West	4,018	1,852	2.95	1,316	1,316	210	210	210	210
South East	3,528	10,408	2.95	1,155	1,155	185	185	185	185
Total	8,931	26,345		2,924	2,924	468	468	468	468

Approach

Establish the overall demand for Catholic primary education for the Bannockburn Growth Area based on an occupancy rate of 2.9 person occupancy per household (VPA rate).

Total population*(11%)*(18%) =

Where 11% represents that share of the population that is 5 to 11 years old and 18% represents the sector share in the Parish of Meredith. Refer to table on next page.

Area	Number of dwellings	Number of people based on CEM rate of <u>2.9</u> persons per household
Somerset	204	602
North West	1,181	3,483
South West	4,018	11,852
South East	3,528	10,408
TOTAL	8,931	26,345

Bannockburn	Dwellings	Population	Dwelling occupancy	11%	10%	18%	18%
				5 to 11 years	12 to 17 years	Catholic	Catholic
Somerset	204	602	2.95	60	57	11	10
North West	1,181	3,483	2.95	348	331	63	60
South West	4,018	11,852	2.95	1,185	1,126	213	203
South East	3,528	10,408	2.95	1,041	989	187	178
Total	8,931	26,345		2,635	2,503	474	450

Recommendation

Advise the VPA that:

1. A new Catholic primary school is required for the Bannockburn growth area. Estimated demand in the range of 468 to 474 primary student places, based on a 16% and 18% sector share respectively, will be generated from the proposed residential subdivision of land in the growth area.
2. The proposed new school will support the existing school of St Mary MacKillop, anticipated to grow to 325 enrolments over the next 12 months, with capacity to increase to 500 students in the longer term.
3. ██████ requests the designation of a 3 hectare site for a non-government primary school and ancillary Early Learning Centre in a suitable location within the growth area.
4. ██████ advises that a secondary school is not required within Bannockburn.