

After Melways 2010



Cardno Lane Piper Pty Ltd

PROJECT: Phase 1 ESA,
Wollert Precinct Structure Plan
Growth Areas Authority

SCALE(A3): as shown DRAWN: PAM

REF: 211213 Figure 1.cdr

TITLE:

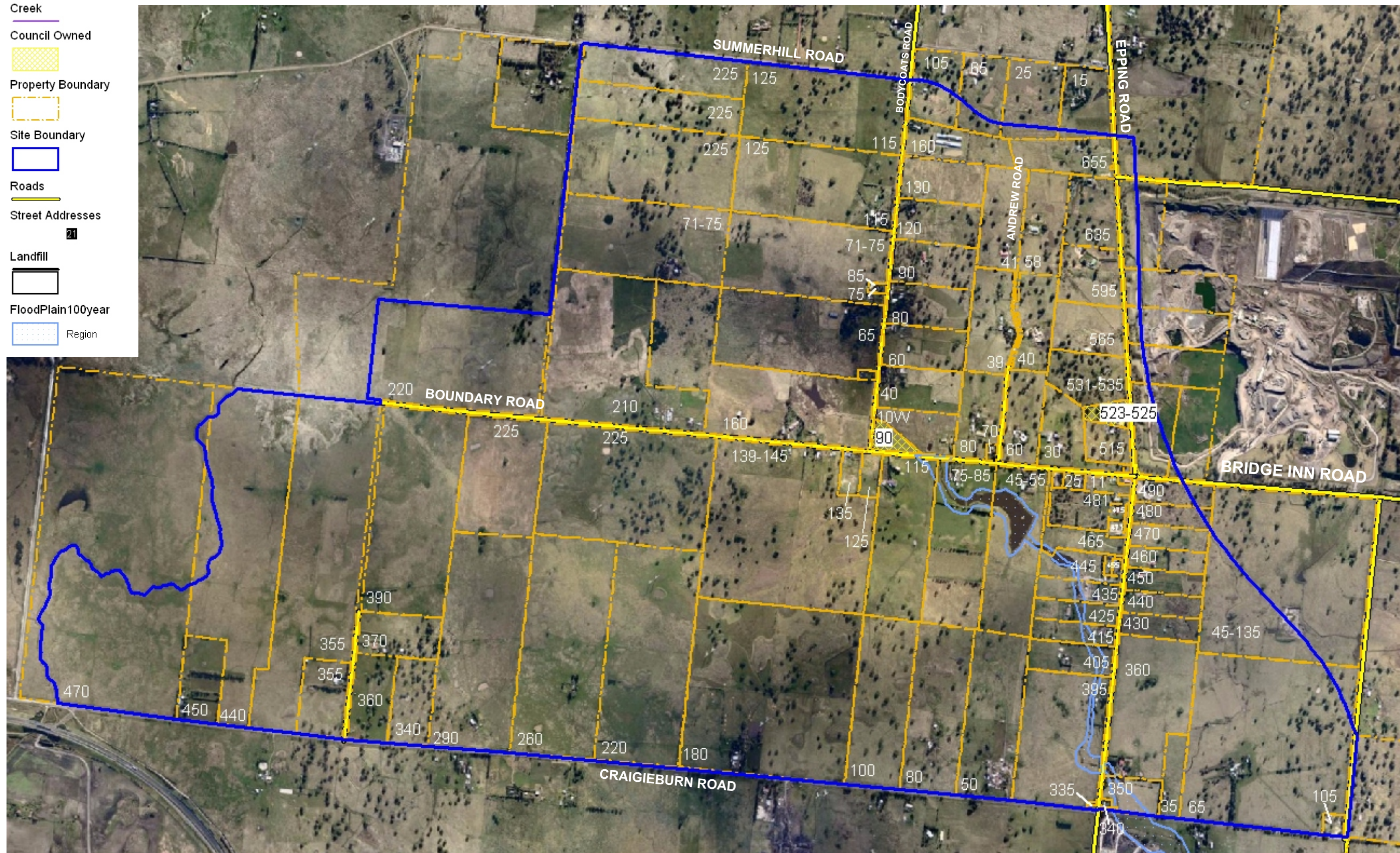
Site Locality

DATE: 7 March 2012

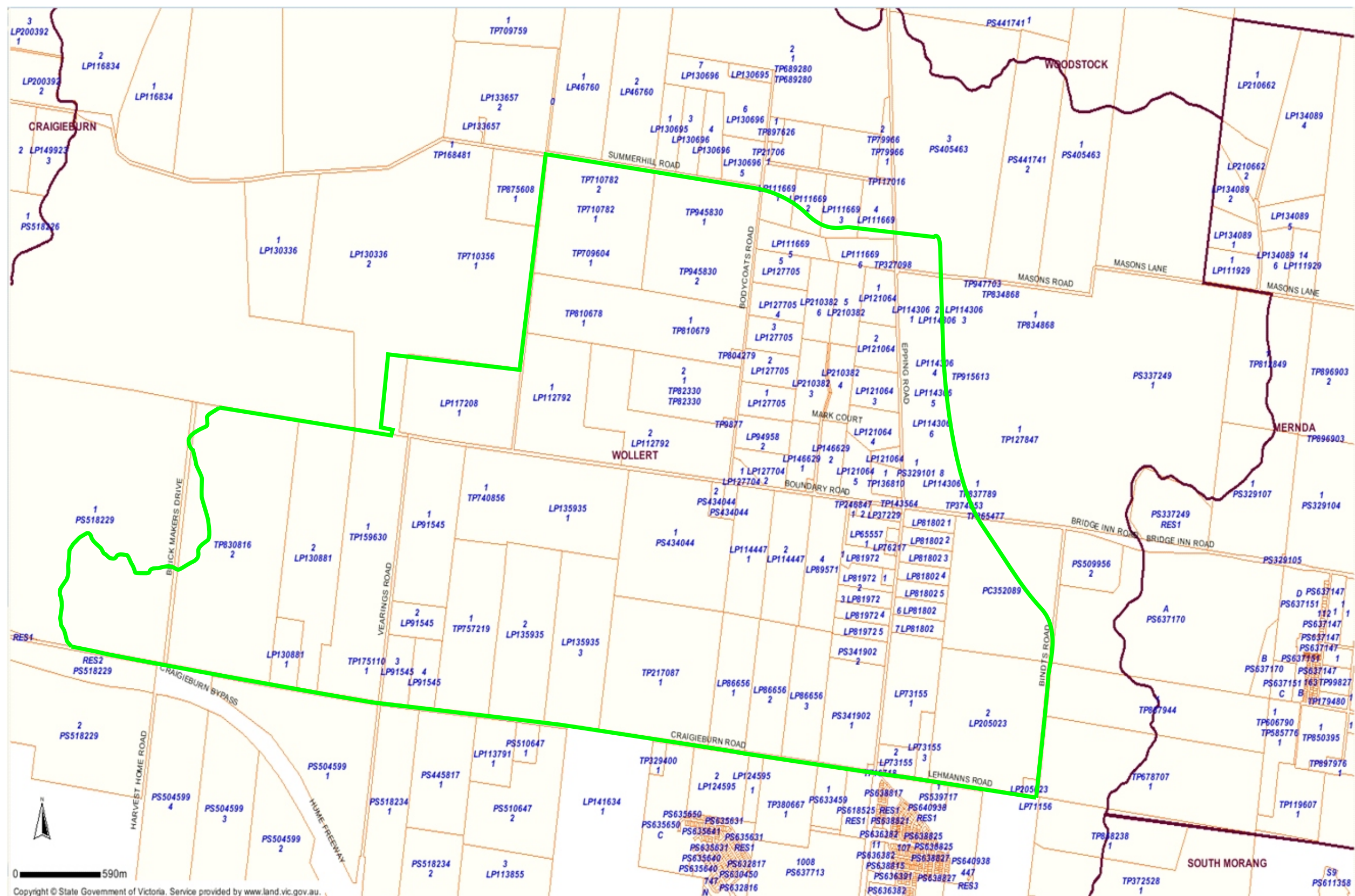
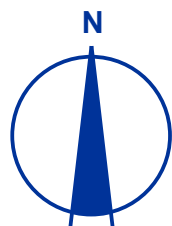
REV: 0

JOB No: 211213

FIG: 1



Base image after Nearmap 2012



Approximate Site
Boundary

Base image after State Gov. of Victoria 2012



Cardno Lane Piper Pty Ltd
www.lanepiper.com.au

PROJECT: Phase 1 ESA
Wollert Precinct Structure Plan
Growth Areas Authority

SCALE (A3): as shown

DATE: 7 March 2012

DRAWN: PAM

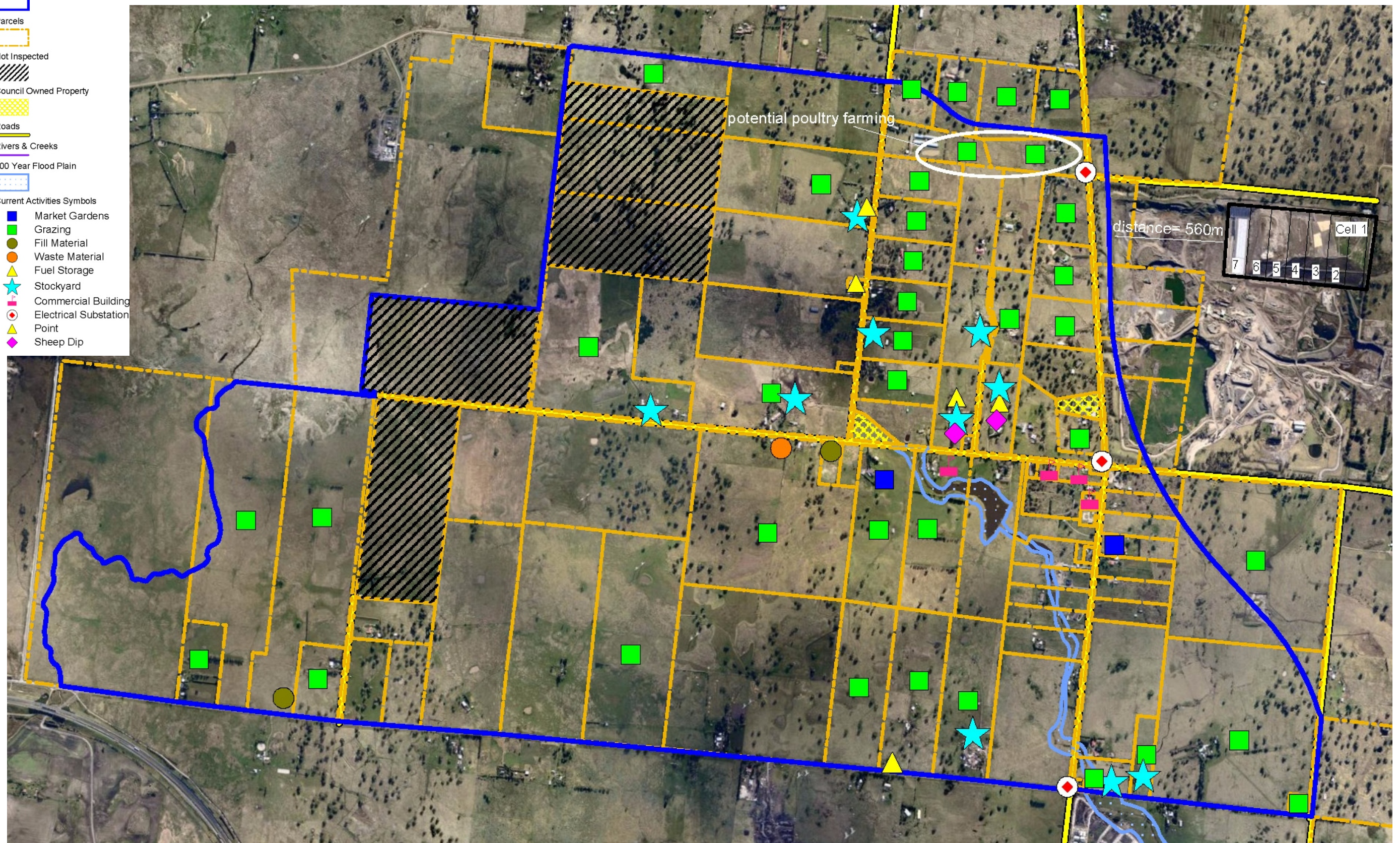
JOB No: 211213

REF: 211213_Figure2b.cdr

TITLE: Precinct Structure Plan
Parcel Identifier

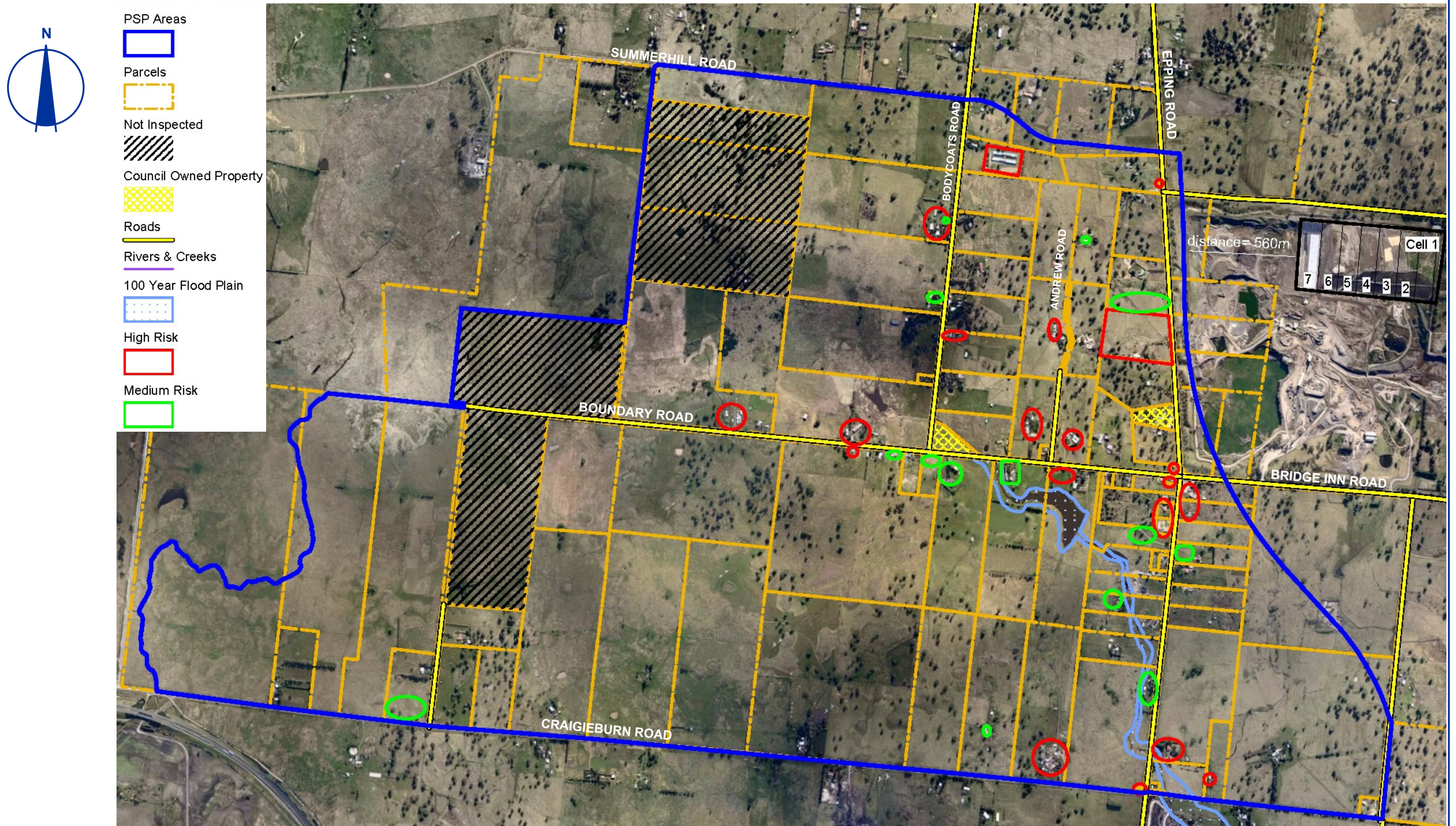
REV: 0

FIG: 2b

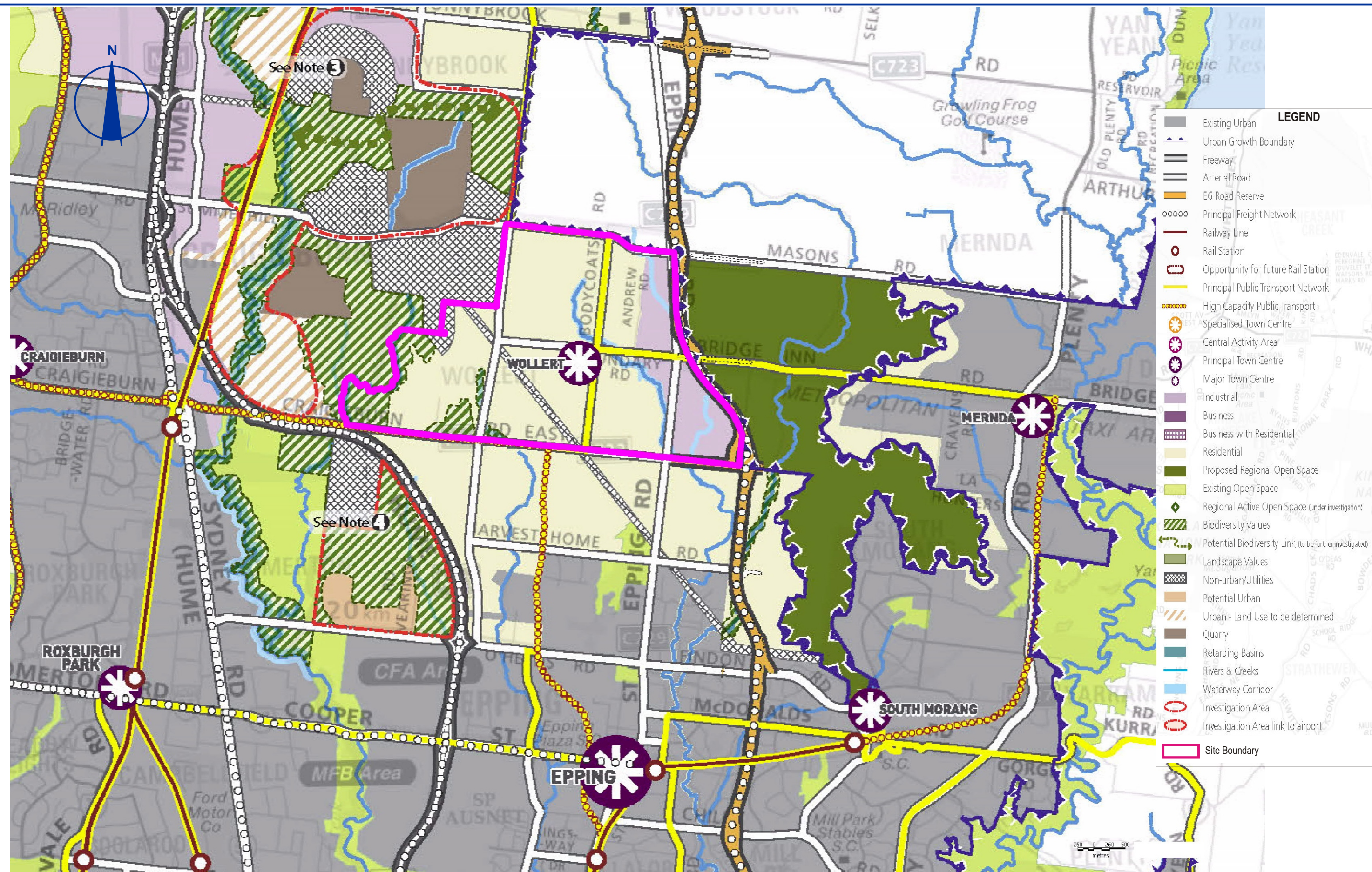


Base image
after GAA 2012

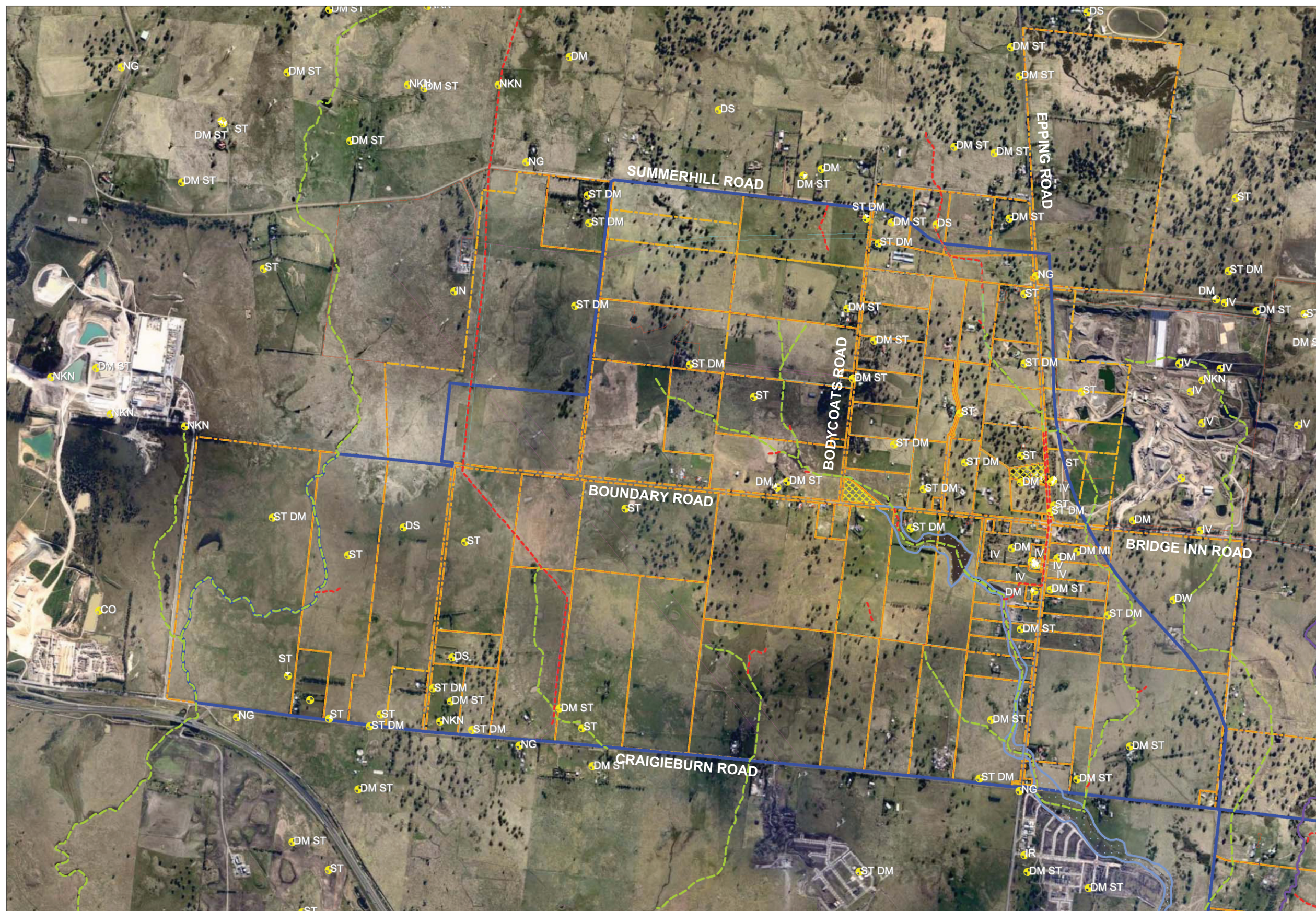
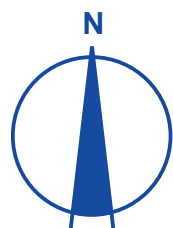
150 0 150 300 Scale 1:20,000
metres



Base image after GAA 2012



Base image after City of Whittlesea 2012



Base image after City of Whittlesea 2011



Cardno Lane Piper Pty Ltd
www.lanepiper.com.au

PROJECT: Phase 1 ESA,
Wollert Precinct Structure Plan
Growth Areas Authority

SCALE (A3): as shown

DRAWN: PAM

REF: 211213_Figure6.cdr

DATE: 7 March 2012

JOB No: 211213

TITLE:

Location of Groundwater Bores

REV: 0

FIG: 6