



## Department of Education & Training

Infrastructure and Finance Services Group

2 Treasury Place  
East Melbourne Victoria 3002  
Telephone: 03 9637 2000  
DX210083

COR041765

Mr Paul Cassidy  
Director, Greenfields  
Victorian Planning Authority  
[amendments@vpa.vic.gov.au](mailto:amendments@vpa.vic.gov.au)

### RE: Cardinia Amendment C234 Pakenham East Precinct Structure Plan (PSP)

Dear Mr Cassidy

Thank you for the opportunity to make a submission in relation to the exhibited Pakenham East Precinct Structure Plan (PSP).

The Department of Education and Training (DET) is satisfied with the number and distribution of the proposed government schools being reflected in the PSP and can confirm that it will allocate the interim names of *Deep Creek Proposed P6*, *Hancocks Gully Proposed P6* and *Pakenham East Proposed 7-12* to these school sites to aid in their identification (see **Attachment A**). These names can be included in Table 8 Precinct Infrastructure Plan on p70.

DET has reviewed the PSP and requests the following changes:

1. The government school sites throughout the document should be consistently referred to as “proposed government school”, not “government school” or “State School” or “future government school” or “potential government school”.

In the PSP, this includes references in Plan 3 *Future Urban Structure* on p12, section 2.2 *Objectives* on p14, Plan 4 *Land Use Budget* on p16, Table 1 *Summary Land Use Budget* on p17, Table 4 *Town Centre Hierarchy* and Table 5 *Anticipated Employment Creation in the Precinct* on p28, Figure 4 *Sports Reserve 2 Concept Plan* on p41, Table 9 *Property Specific Land Use Budget* on p76.

2. Figure 2 *Town Centre Concept Plan* depicts a proposed configuration of the non-government school on p30 and the text as shown on the map’s legend should read as: “potential non-government school” and not “potential government school”.
3. An additional item in Table 8 *Precinct Infrastructure - Education Projects* on p70-71 should be included in relation to the proposed government secondary school in the PSP.
4. The Pakenham East Proposed 7-12 school site size should be increased to 8.4ha. The school site as currently shown would not be large enough to meet DET’s greenfield standard of 8.4ha for a government secondary school.

5. While it is DET's preference that proposed school sites are in single ownership, DET is prepared to consider a site for Pakenham East Proposed 7-12 that falls across two parcels if both parcels are being managed by the same consortium.
6. Guideline G36 under 3.3.2 Community Facilities and Education on p.43 should be updated to read as: "*Design and layout of community facilities should:... Encourage the integration of schools, early childhood facilities and other community facilities where they are co-located.*"
7. An additional Requirement should be included under 3.3.2 Community Facilities and Education on p.43 that reads: "At least two roads abutting proposed government schools sites must have sufficient widths to provide student drop-off zones and on-street indented parking in addition to other street functions."

DET would appreciate it if you could confirm that its requested changes to the PSP are implemented.

In addition, according to Plan 10 - *Utilities* on p.60, all three proposed school sites are within close proximity to existing high pressure gas pipelines and other potential hazards. DET is concerned about the proximity of the proposed government school sites to high-pressure gas pipelines and the potential impact of the Deep Creek Proposed P6 site being located in a 1 in 100-year flood layer.

DET is unlikely to consider the proposed government school sites as shown in the Pakenham East PSP as being suitable for a future government school unless the following conditions are met for proposed sites:

- Sites are at least 400m from Extra High Transmission Lines
- An appropriate distance from any high pressure gas pipelines is maintained
- An appropriate distance from any other potential hazards (e.g. quarries, sources of noise or air pollution) is maintained
- Do not have features that will significantly affect building costs, occupational health and safety considerations, and the impact on emergency management and accessibility for any future schools.

If you wish to discuss these issues, please contact Ms Lisel Thomas, Manager Provision Planning, Resources Strategy Division, on 9637 3860 or by email: [provision.planning@edumail.vic.gov.au](mailto:provision.planning@edumail.vic.gov.au)

I look forward to working together on the development of these schools.

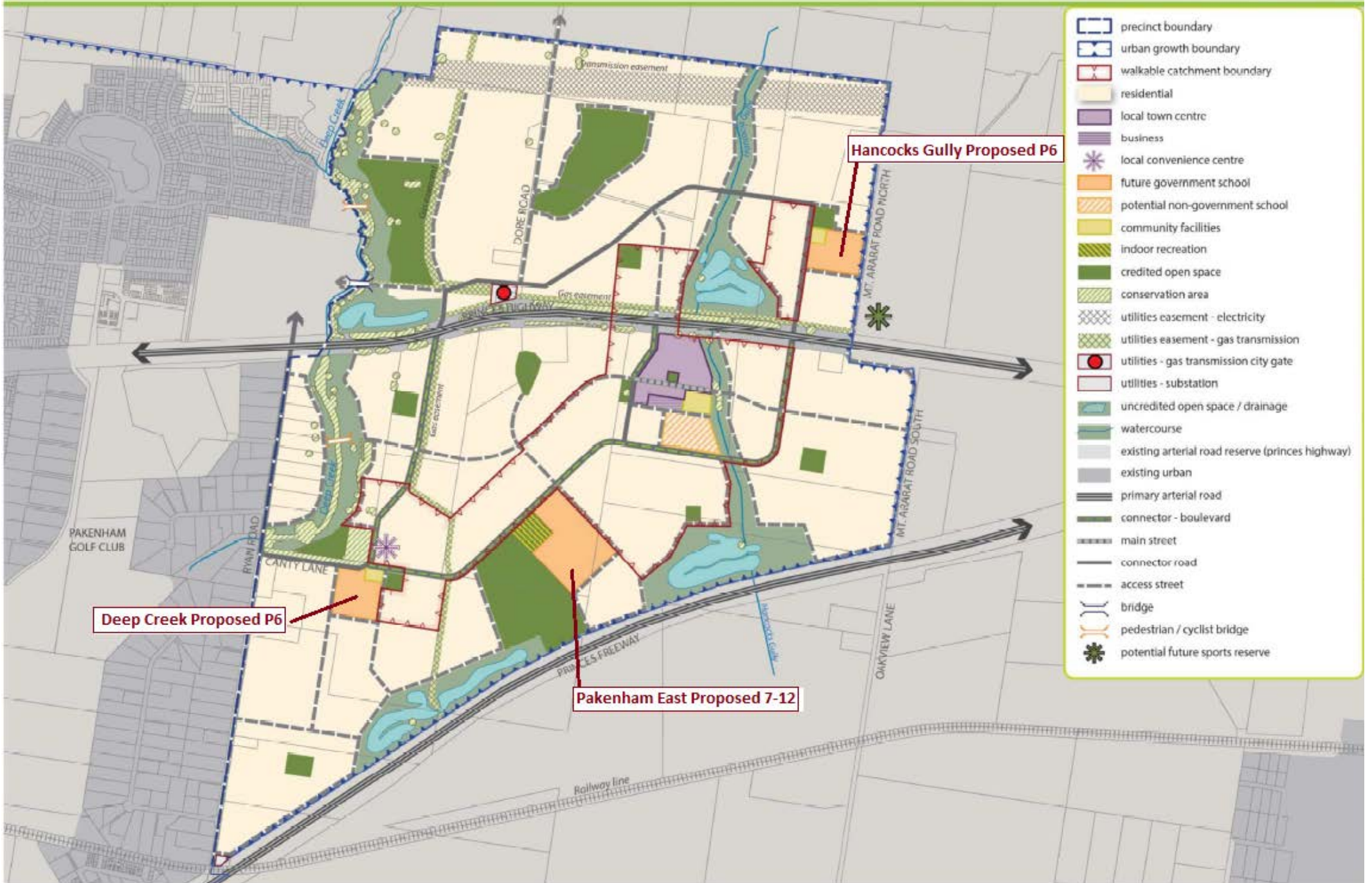
Yours sincerely



**Lynda Rogers**  
Executive Director  
Resources Strategy Division

23 / 2/2018





- precinct boundary
- urban growth boundary
- walkable catchment boundary
- residential
- local town centre
- business
- local convenience centre
- future government school
- potential non-government school
- community facilities
- indoor recreation
- credited open space
- conservation area
- utilities easement - electricity
- utilities easement - gas transmission
- utilities - gas transmission city gate
- utilities - substation
- uncredited open space / drainage
- watercourse
- existing arterial road reserve (princes highway)
- existing urban
- primary arterial road
- connector - boulevard
- main street
- connector road
- access street
- bridge
- pedestrian / cyclist bridge
- potential future sports reserve