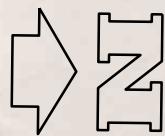


1110

50mm AT FULL SIZE



SUNBURY ROAD

1 2

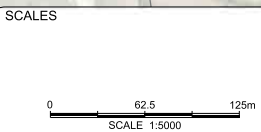


PRELIMINARY ISSUE
NOT FOR CONSTRUCTION

REV	DATE	DESCRIPTION	DRAWN	CHECK	DESIGN	VERIFY
A	10/12/15	ISSUED FOR INFORMATION	RAM	GW	RAM	DR

© Parsons Brinckerhoff Australia Pty Limited ("PB")
Copyright in the drawings, information and data recorded in
this document ("the information") is the property of PB. This
document and the information are solely for the use of the
authorised recipient and this document may not be used,
copied or reproduced in whole or part for any purpose other
than that for which it was supplied by PB. PB makes no
representation, undertakes no duty and accepts no
responsibility to any third party who may use or rely upon this
document or the information.

NCSI certified Quality System to ISO 9001



A3 ORIGINAL
DO NOT SCALE THIS DRAWING - USE FIGURED DIMENSIONS ONLY
VERIFY ALL DIMENSIONS ON SITE

APPROVED FOR AND ON BEHALF OF
PARSONS BRINCKERHOFF AUSTRALIA PTY LIMITED

SIGNED _____
DATE _____

**PARSONS
BRINCKERHOFF**

Level 15
28 Freshwater Place
Southbank, Melbourne
VIC 3006
PO BOX 19016
Melbourne VIC 3006
Australia

ABN 80 078 004 798

Telephone +61 3 9861 1111
Facsimile +61 3 9861 1144
Email: melbourne@pb.com.au



PROJECT			
SUNBURY STH AND LANCEFIELD RD PSP			
LAYOUT PLAN ULTIMATE LAYOUT LANCEFIELD ROAD (SS-RD2)			
PROJECT No. 2113308A	DISCIPLINE - CIV -	NUMBER 1110	REV. A



FOR CONTINUATION REFER TO SUNBURY ROAD (SS-RD1) SHEET 3

LANCEFIELD ROAD (SS-RD2)



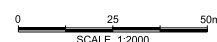
PRELIMINARY ISSUE
NOT FOR CONSTRUCTION

A	10/12/15	ISSUED FOR INFORMATION			RAM	GW	RAM	DR
REV	DATE	DESCRIPTION			DRAWN	CHECK	DESIGN	VERIFY
26/10/2016		12:56:35 PM						

© Parsons Brinckerhoff Australia Pty Limited ("PB")
Copyright in the drawings, information and data recorded in this document ("the information") is the property of PB. This document and the information are solely for the use of the authorised recipient and this document may not be used, copied or reproduced in whole or part for any purpose other than that for which it was supplied by PB. PB makes no representation, undertakes no duty and accepts no responsibility to any third party who may use or rely upon this document or the information.

NCSI certified Quality System to ISO 9001

SCALES



A3 ORIGINAL

DO NOT SCALE THIS DRAWING - USE FIGURED DIMENSIONS ONLY
VERIFY ALL DIMENSIONS ON SITE

APPROVED FOR AND ON BEHALF OF
PARSONS BRINCKERHOFF AUSTRALIA PTY LIMITED

SIGNED _____

DATE _____

**PARSONS
BRINCKERHOFF**

Level 15
28 Freshwater Place
Southbank, Melbourne
VIC 3006
PO BOX 19016
Melbourne VIC 3006
Australia

ABN 80 078 004 75

Telephone +61 3 9861 1111
Facsimile +61 3 9861 1114
Email: melbourne@pb.com.au

CLIENT



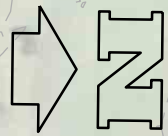
PROJECT
SUNBURY STH AND LANCEFIELD RD PSP

ALIGNMENT PLAN
ULTIMATE LAYOUT
LANCEFIELD ROAD (SS-RD2)
SHEET 1

PROJECT No.	DISCIPLINE	NUMBER	REV
2113308A	- CIV -	1111	A

1112

50mm AT FULL SIZE



1000

1100

1200

1300

1400

1500

1600

1680

LANCEFIELD ROAD (SS-RD2)

INTERSECTION
SS - IT8

GELLIES ROAD

FOR CONTINUATION REFER TO SHEET 1

FOR CONTINUATION REFER TO LANCEFIELD ROAD (LR-RD1) SHEET 1
LIMIT OF SUNBURY SOUTH PSP



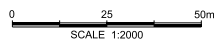
PRELIMINARY ISSUE
NOT FOR CONSTRUCTION

REV	DATE	DESCRIPTION	DRAWN	CHECK	DESIGN	VERIFY
B	30/06/2016	ADDED GELLIES ROAD INTERSECTION	DH	GW	DH	DR
A	10/12/15	ISSUED FOR INFORMATION	RAM	GW	RAM	DR

© Parsons Brinckerhoff Australia Pty Limited ("PB")
Copyright in the drawings, information and data recorded in
this document ("the information") is the property of PB. This
document and the information are solely for the use of the
authorised recipient and this document may not be used,
copied or reproduced in whole or part for any purpose other
than that for which it was supplied by PB. PB makes no
representation, undertakes no duty and accepts no
responsibility to any third party who may use or rely upon this
document or the information.

NCSI certified Quality System to ISO 9001

SCALES



A3 ORIGINAL

DO NOT SCALE THIS DRAWING - USE FIGURED DIMENSIONS ONLY
VERIFY ALL DIMENSIONS ON SITE

APPROVED FOR AND ON BEHALF OF
PARSONS BRINCKERHOFF AUSTRALIA PTY LIMITED

SIGNED
DATE

**PARSONS
BRINCKERHOFF**

Level 15
28 Freshwater Place
Southbank, Melbourne
VIC 3006
PO BOX 19016
Melbourne VIC 3006
Australia

ABN 80 078 004 798

Telephone +61 3 9861 1111
Facsimile +61 3 9861 1144
Email: melbourne@pb.com.au

CLIENT



PROJECT			
SUNBURY STH AND LANCEFIELD RD PSP			
ALIGNMENT PLAN ULTIMATE LAYOUT LANCEFIELD ROAD (SS-RD2) SHEET 2			
PROJECT No.	DISCIPLINE	NUMBER	REV.
2113308A	- CIV -	1112	B