

## INFRASTRUCTURE CONTRIBUTIONS PLAN

Throughout the development of the Precinct Structure Plan (PSP), the MPA and Melton City Council have planned the infrastructure required for the future community. Basic and essential infrastructure such as arterial roads, intersections, bridges, community facilities, sports and recreation facilities and open space will be funded. The Victorian Government has recently passed legislation to introduce an Infrastructure Contribution Plan (ICP) system that will replace the current Development Contribution Plan (DCP) system to fund this basic and essential infrastructure.

The new system is expected to come into effect in mid-2016. The ICP that will apply to Mt Atkinson and Tarneit Plains PSP will be developed when the new system is in place. If

the PSP is gazetted prior to development of an ICP for the precinct, landowners may form a Section 173 agreement with Council to fund infrastructure, as an interim option.

The items expected to be funded through the ICP are listed in Table 9 - Precinct Infrastructure and displayed in Plan 13- Precinct Infrastructure Plan in the PSP document and overleaf. This Plan indicates the infrastructure items to be funded through the PSP.

## FREQUENTLY ASKED QUESTIONS

### WHAT IS AN INFRASTRUCTURE CONTRIBUTIONS PLAN?

An Infrastructure Contributions Plan (ICP) is a simplified system for funding basic and essential local infrastructure required by a new community. The ICP may be made of one or two parts, a standard levy and/ or a supplementary levy. The standard levy is a pre-set rate that may be used to fund transport, community and recreation infrastructure and public land provision. In particular circumstances a supplementary levy may also apply.

### HOW MUCH WILL THE ICP RATE BE?

The ICP rate will be determined by the Minister for Planning and formalised through a Ministerial Direction.

### WHAT INFRASTRUCTURE WILL BE INCLUDED IN THE ICP?

The basic and essential infrastructure that an ICP can fund will be detailed in the future Ministerial Direction. The specific infrastructure items that are expected to be included in any ICP can be identified in the Precinct Infrastructure Plan located within the relevant PSP.

### WILL THE ICP BE INCORPORATED INTO THE PLANNING SCHEME?

Yes.

### WILL THE INTRODUCTION OF AN ICP DELAY A PSP?

No, the PSP will proceed as planned. If the PSP is gazetted prior to the ICP, interim measures will be put in place.

### WHERE CAN I GET MORE INFORMATION?

More information relating to the ICP can be found at <http://www.dtpli.vic.gov.au/planning/about-planning/improving-the-system/infrastructure-contributions-reform>

More information relating to infrastructure items proposed for a particular PSP can be found in the Precinct Infrastructure Plan of that PSP.

For more information on the ICP, please contact:

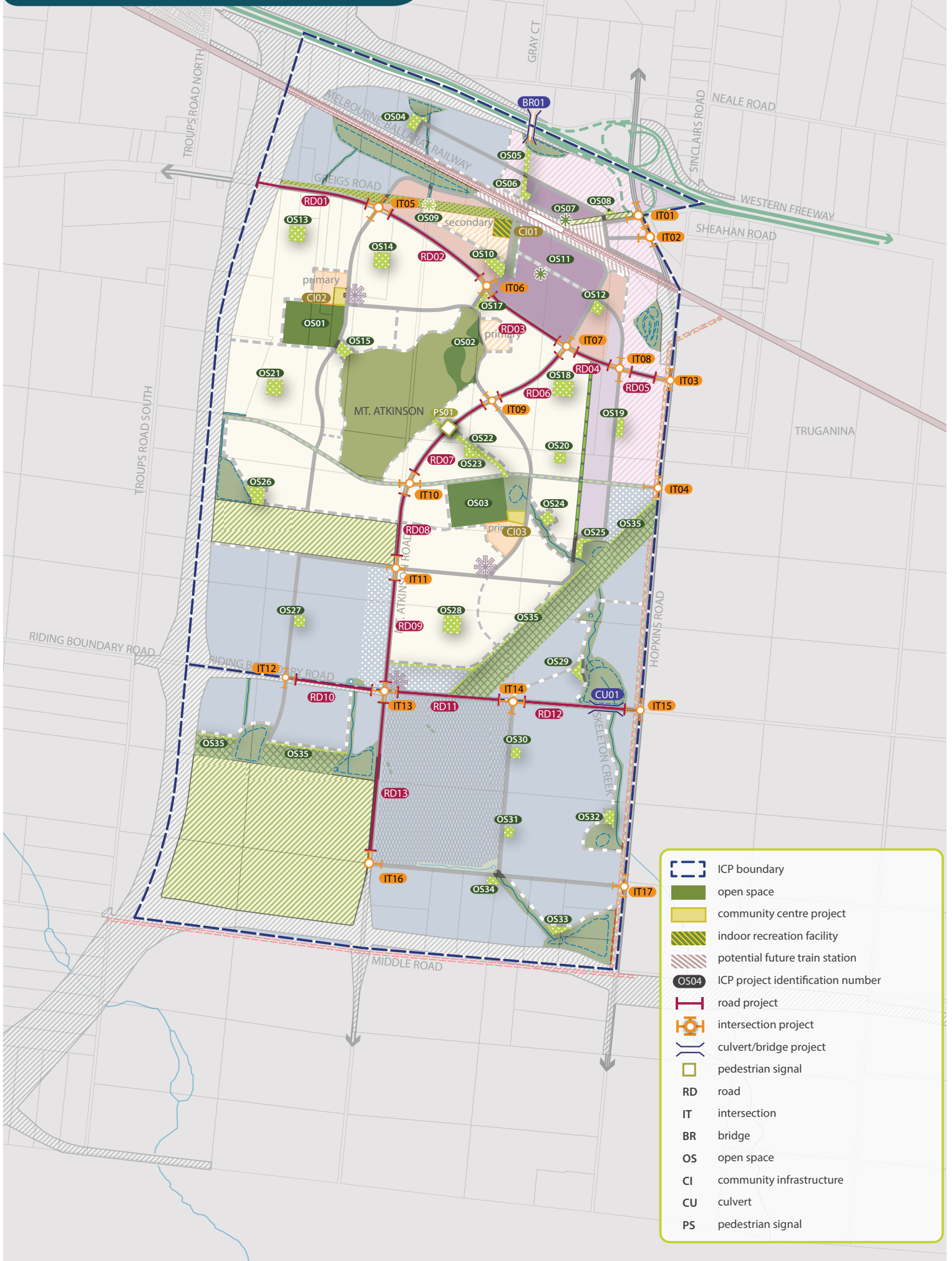
**Ben Hawkins**, Senior Structure Planner  
Metropolitan Planning Authority  
Phone: (03) 9651 9600  
[ben.hawkins@mpa.vic.gov.au](mailto:ben.hawkins@mpa.vic.gov.au)

# Plan 13 - Precinct Infrastructure Plan

Mt. Atkinson & Tarneit Plains Precinct Structure Plan  
1:30,000 @ A4



0 300 600 900 1,200 1,500m



- ICP boundary
- open space
- community centre project
- indoor recreation facility
- potential future train station
- ICP project identification number
- road project
- intersection project
- culvert/bridge project
- pedestrian signal
- RD road
- IT intersection
- BR bridge
- OS open space
- CI community infrastructure
- CU culvert
- PS pedestrian signal