

An architectural rendering of a modern building complex. The main building features a complex, angular design with a facade of horizontal wooden slats and large glass windows. A prominent, dark, cantilevered roof structure extends over a paved plaza area. In the foreground, there is a wooden deck and a paved walkway where several people are walking. The sky is blue with light clouds, and some greenery is visible on the left side.

St Germain Village

Town Planning Application - February 2014

TABLE OF CONTENTS

Section 01

Context

04

Locality Plan

05

Aerial Plan

06

Development Plan

Section 02

Master Plan

08

Master Plan

09

Proposed Super Lot

10

Waste Management Plan

11

Carpark Plan

12

Landscape Plan

13

Lighting Location

14

Bicycle Parking Plan

15

Traffic Plan

Section 03

Detailed Design

17

Precinct Plans

22

Shadow Diagram

24

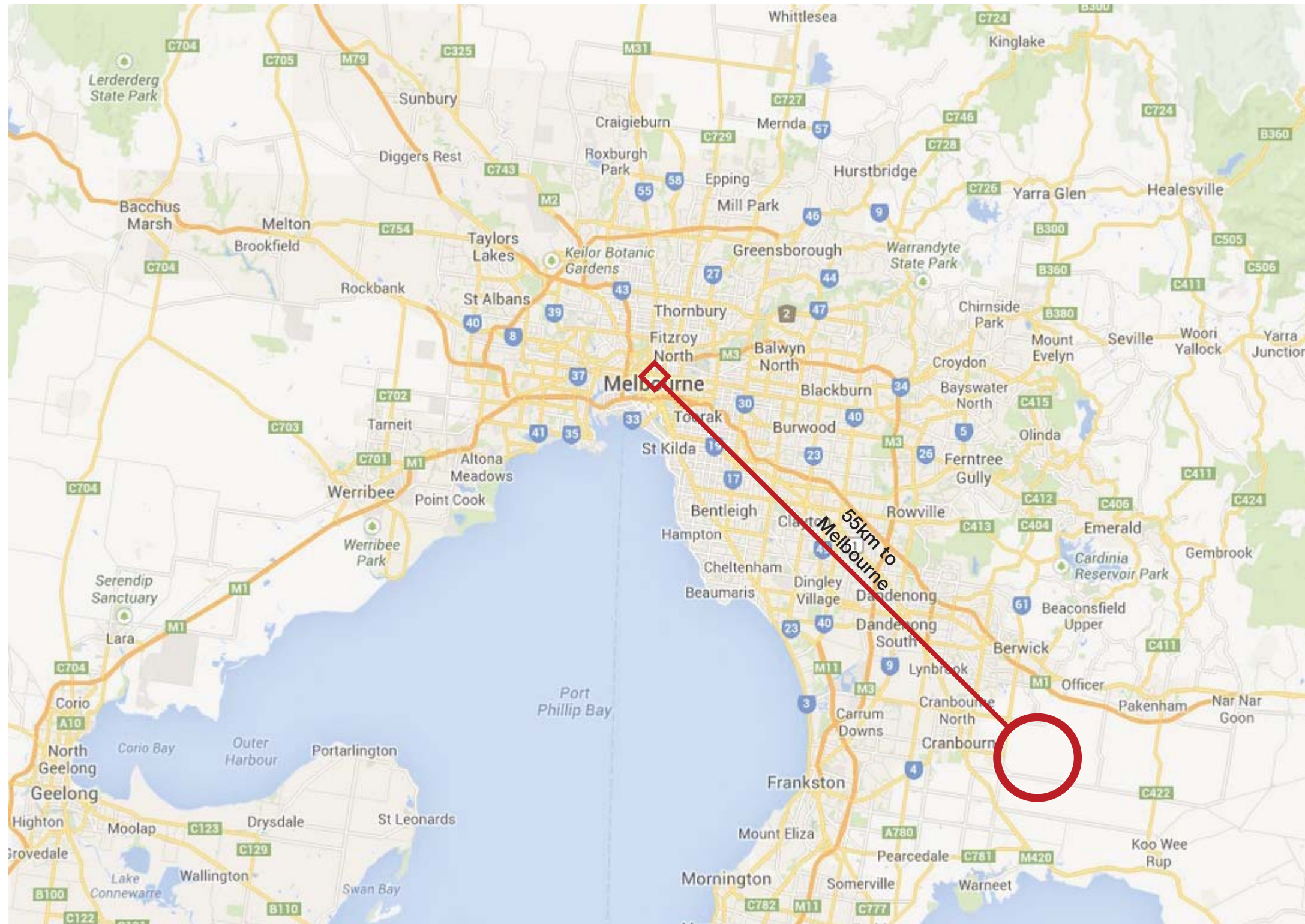
Artist Impressions

25

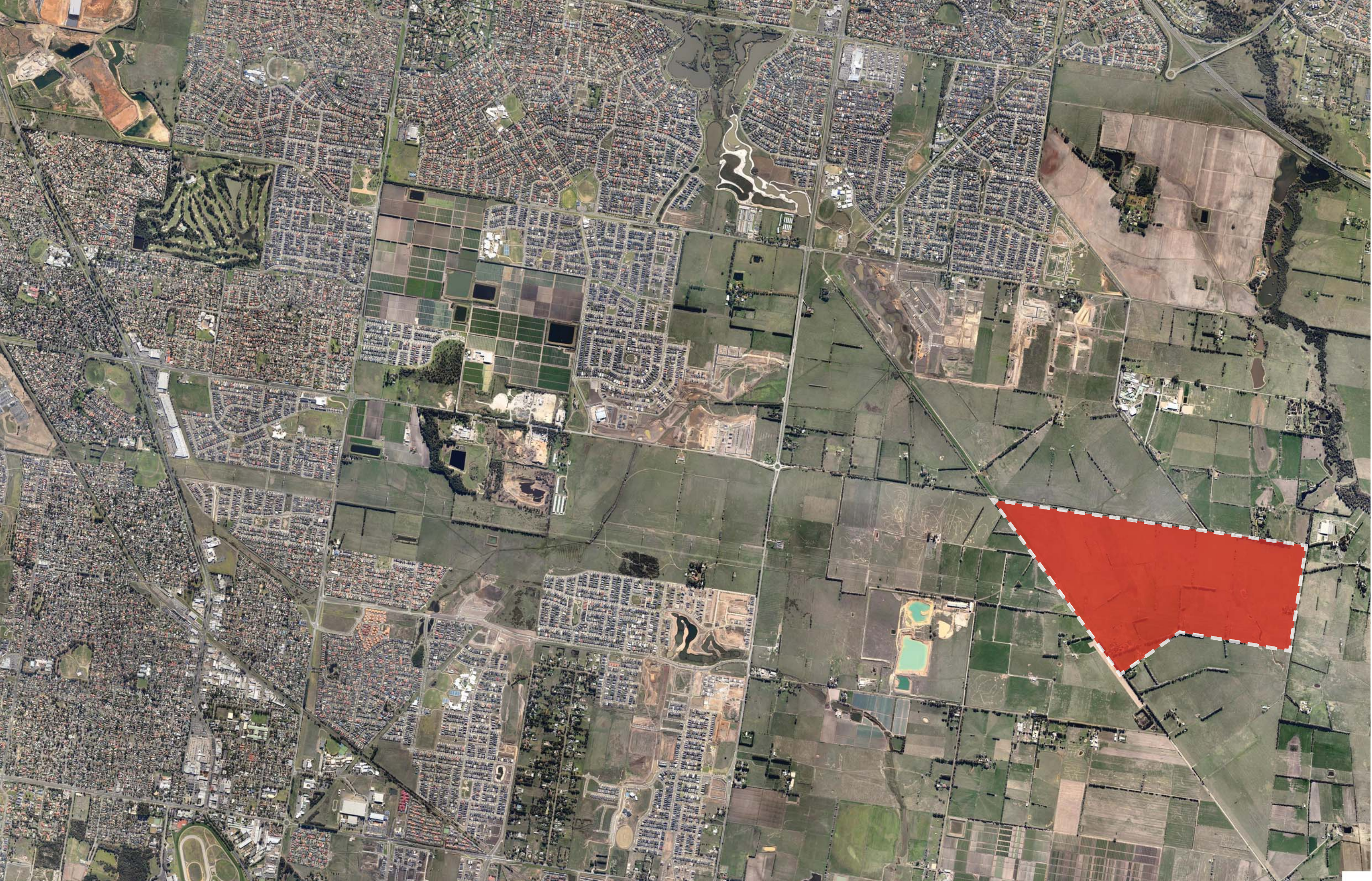
Street Elevations

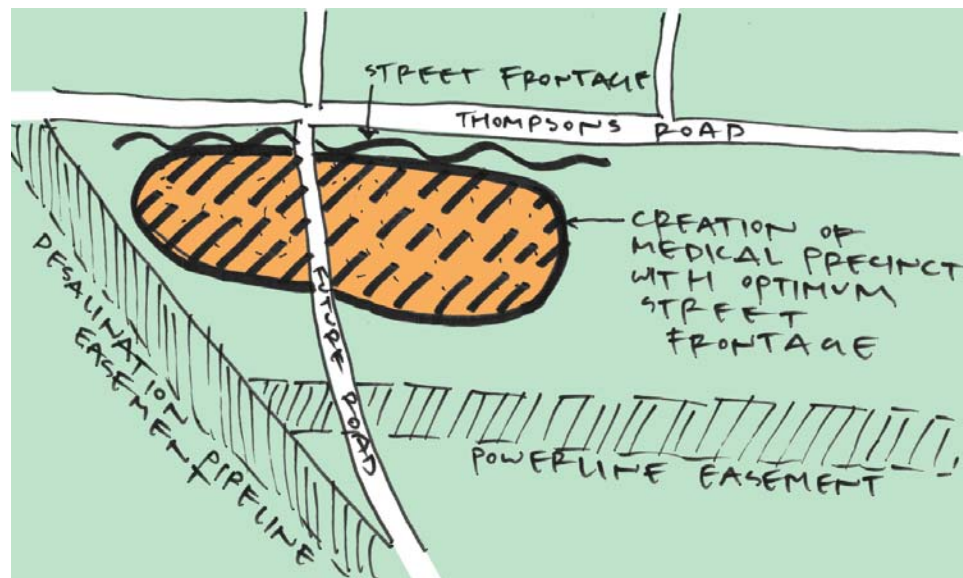
26

Building Lots

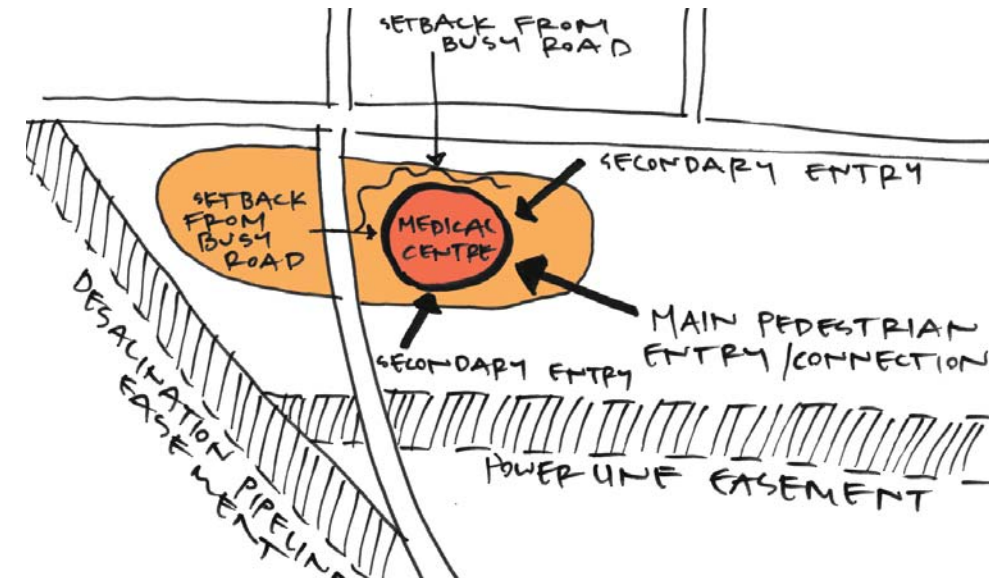


Proximity of St Germain Village to Melbourne

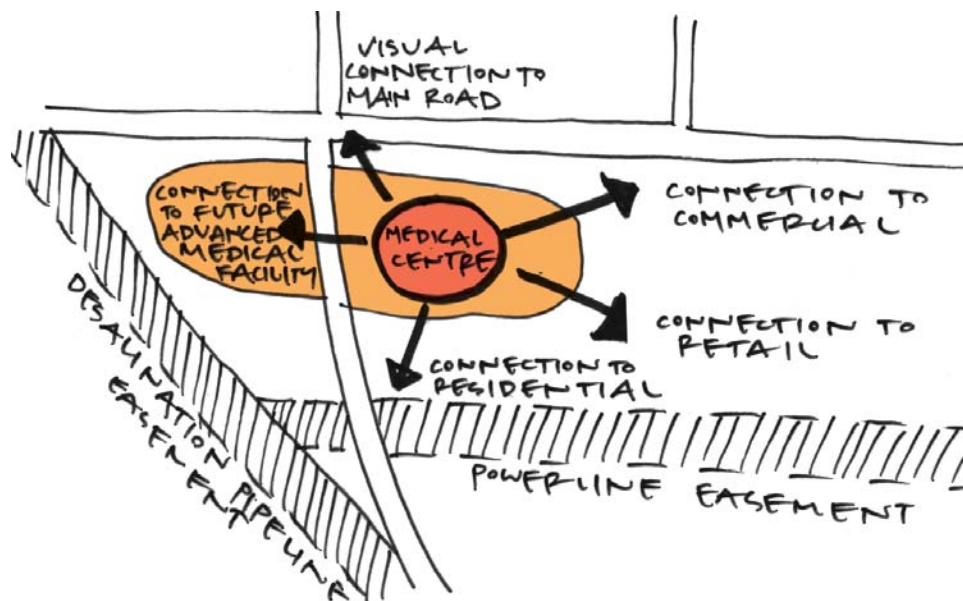




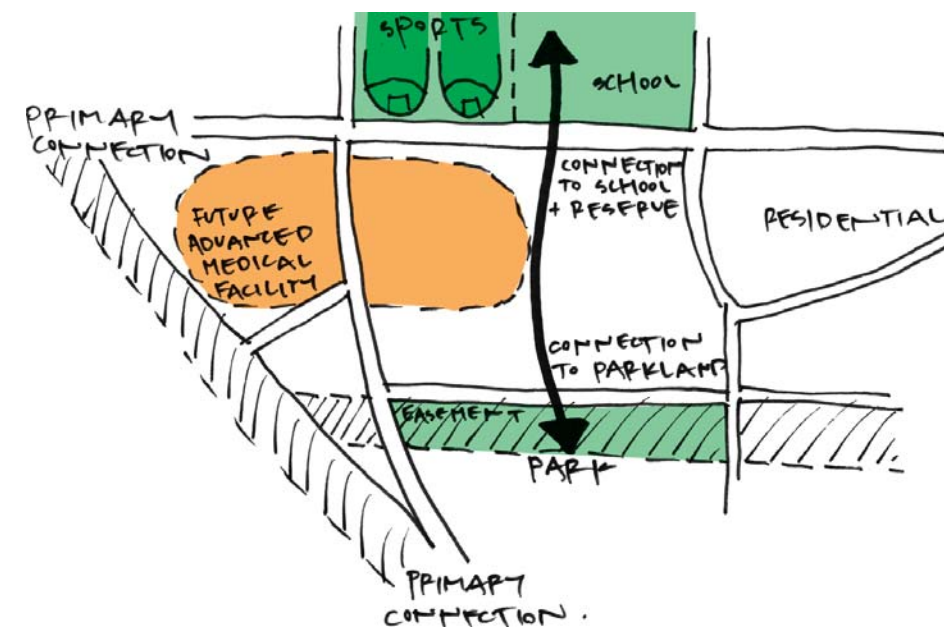
Creation of Medical Precinct



Medical Centre with multiple connections



Activity Nodes / Connections



Active Main St





LOT 1
59.99 Hectares

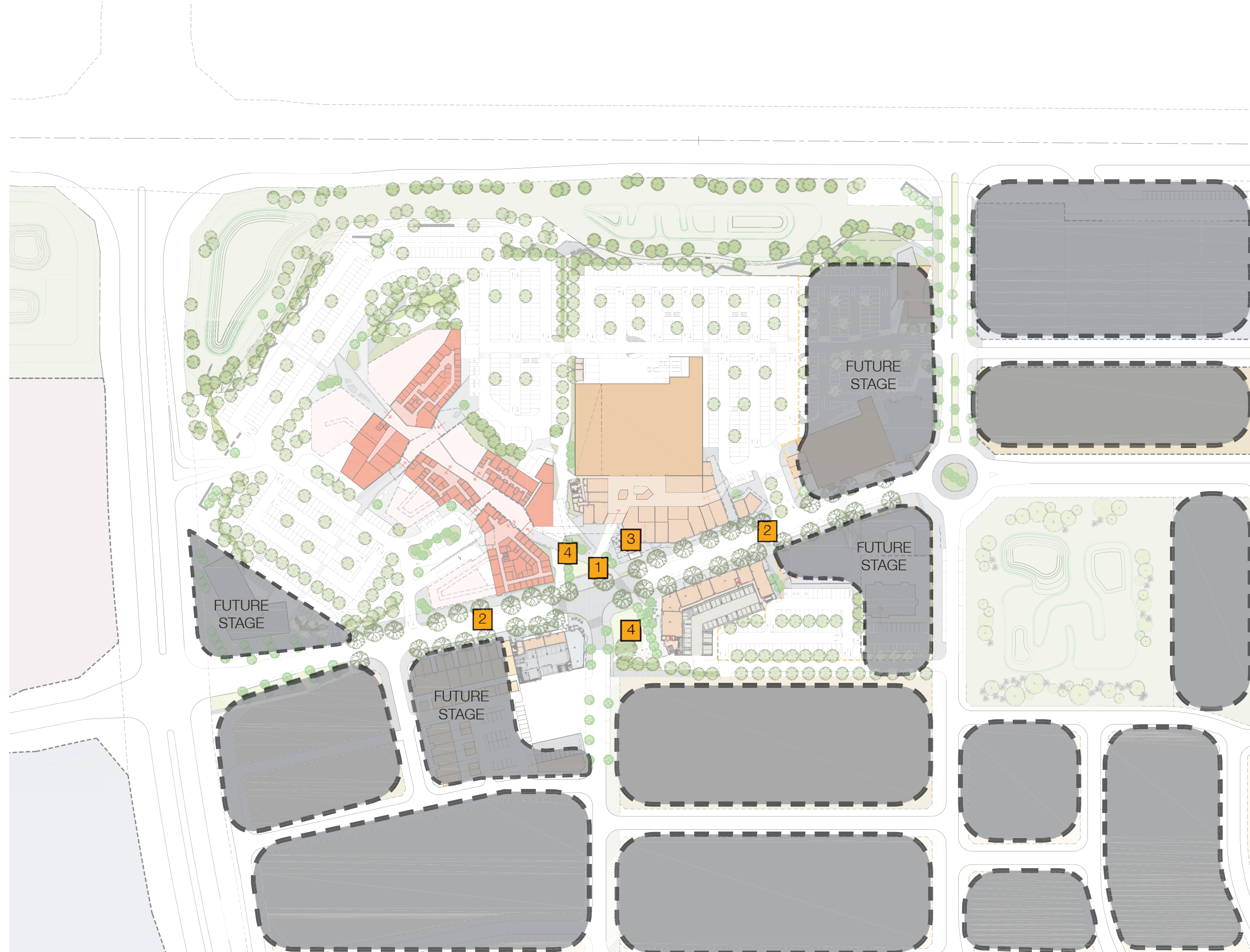


	FUTURE ADVANCED MEDICAL RESERVE
	COMMERCIAL
	RESIDENTIAL
	MEDIUM DENSITY RESIDENTIAL
	HIGH DENSITY RESIDENTIAL
	OFFICES/HOME OFFICES
	RETAIL
	SUPERMARKET
	MEDICAL FACILITY

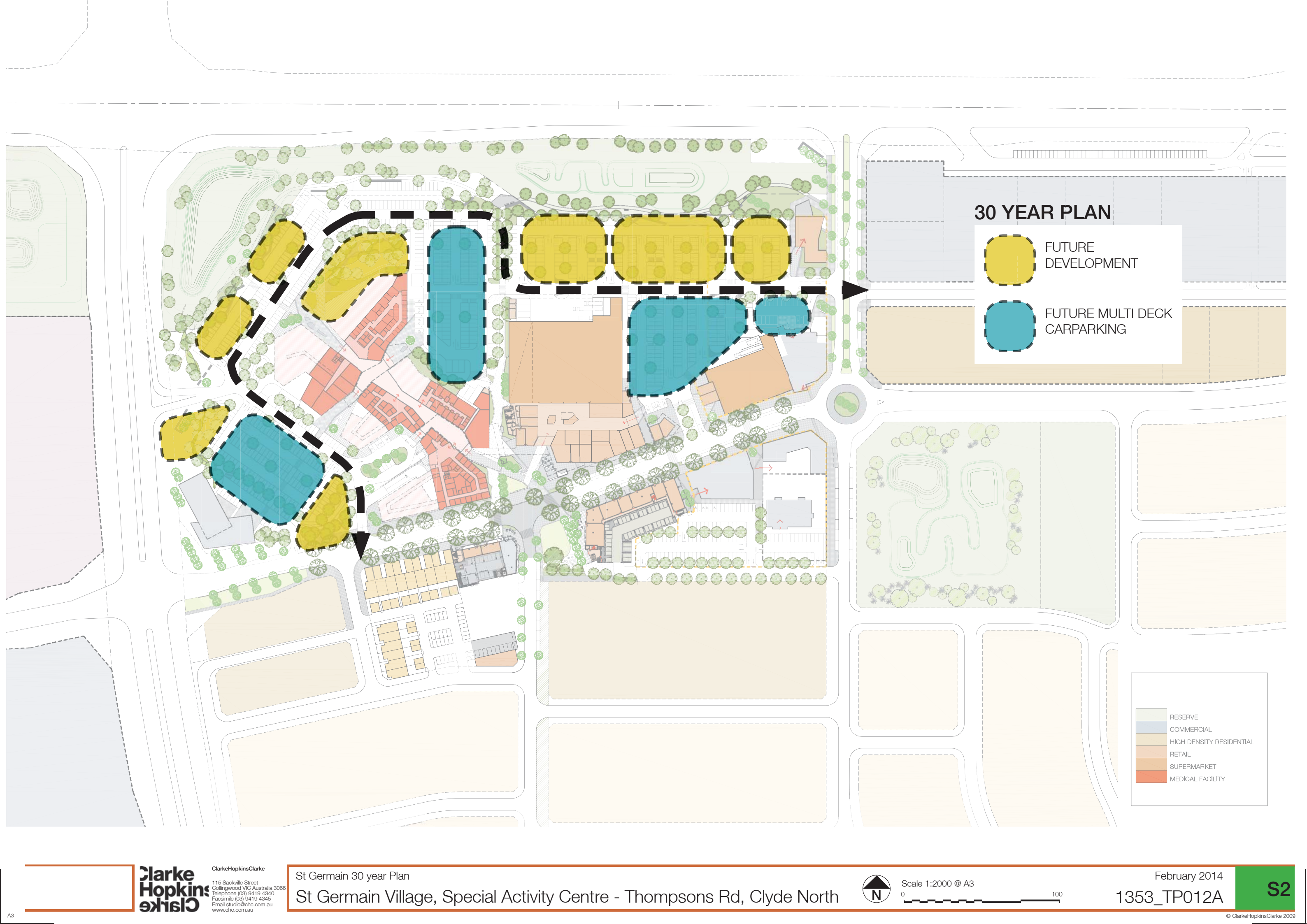


Scale 1:6000 @ A3





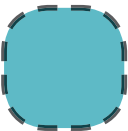
- 1 The proposed site consist of a new special activity centre with medical centre, office, community facilities, retail, commercial, residential and recreation facilities with a central town square and park with petanque field, play equipment and performance / multi purpose stage.
- 2 The proposed design seeks to create a 'village' atmosphere for the precinct with a palette of fine grain materials and individualised built forms throughout the main street. The 'village' fell will help to promote pedestrian activity and create an active and vibrant main street.
- 3 A central clock tower identifies the centre of town and also ties back into the theme of St Germain with inspiration taken from Parisian clock towers.
- 4 Streets are angled so each entry provides a direct visual connection to the heart of the village, the town square and park.



30 YEAR PLAN



FUTURE
DEVELOPMENT



FUTURE MULTI DECK
CARPARKING

- RESERVE
- COMMERCIAL
- HIGH DENSITY RESIDENTIAL
- RETAIL
- SUPERMARKET
- MEDICAL FACILITY



