

Appendix A

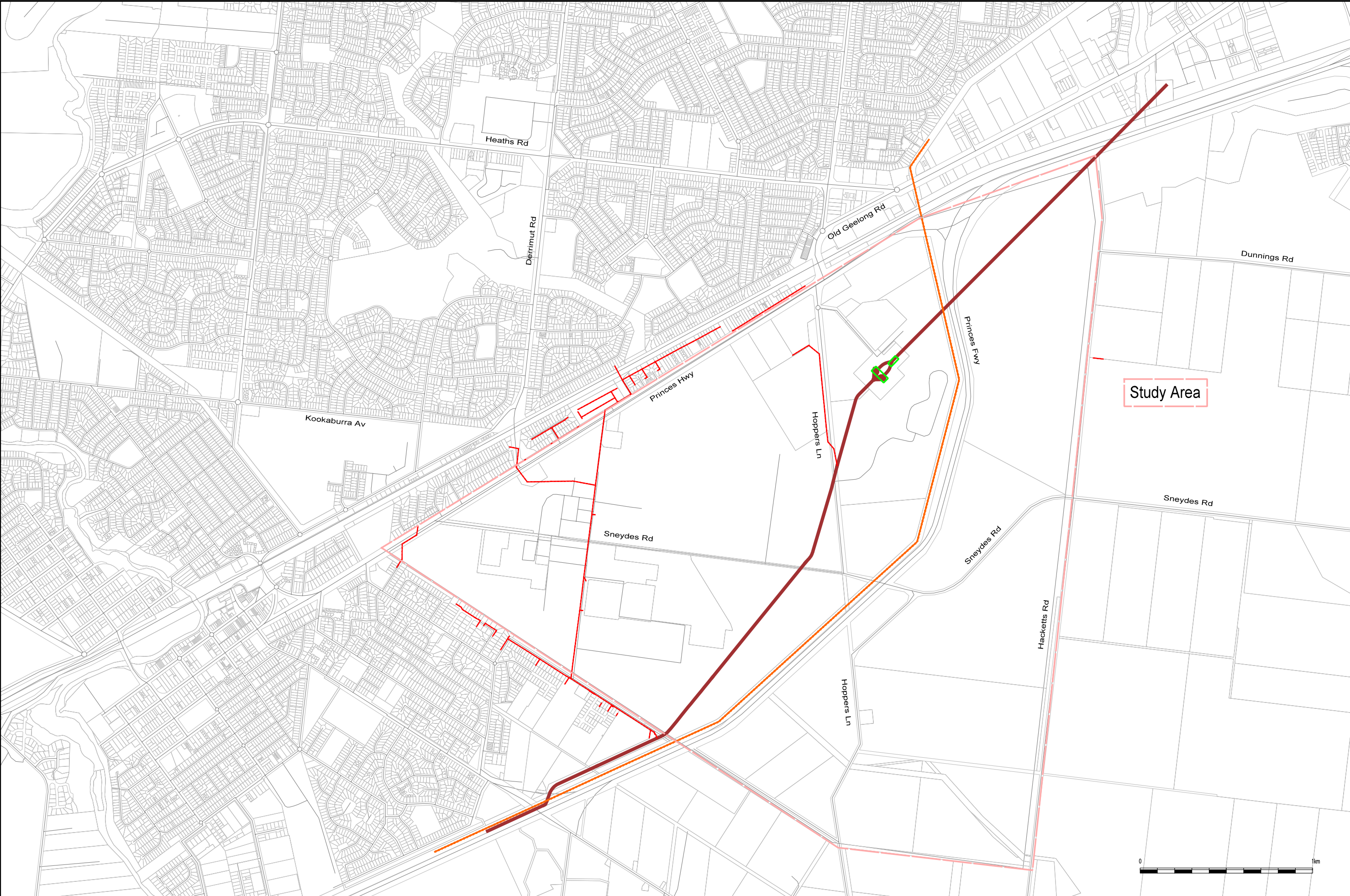
**Primary Services
Infrastructure Drawings
CS01 - CS08**

LEGEND

- City West Water Sewer
- Melbourne Water Sewer Main
- Abandoned Sewer Main
- City West Water Recycled Water
- City West Water Potable Water
- VerNet Optic Fibre Cable
- Optus Optic Fibre Cable
- Shell Oil Pipeline
- Tenix Gas
- APA Gas Main
- PowerCor Electric
- Melbourne Water Stormwater Channel
- Melbourne Water Underground Pipe
- Sneydes Road Retetion Basin
- Telstra Trunk Infrastructure



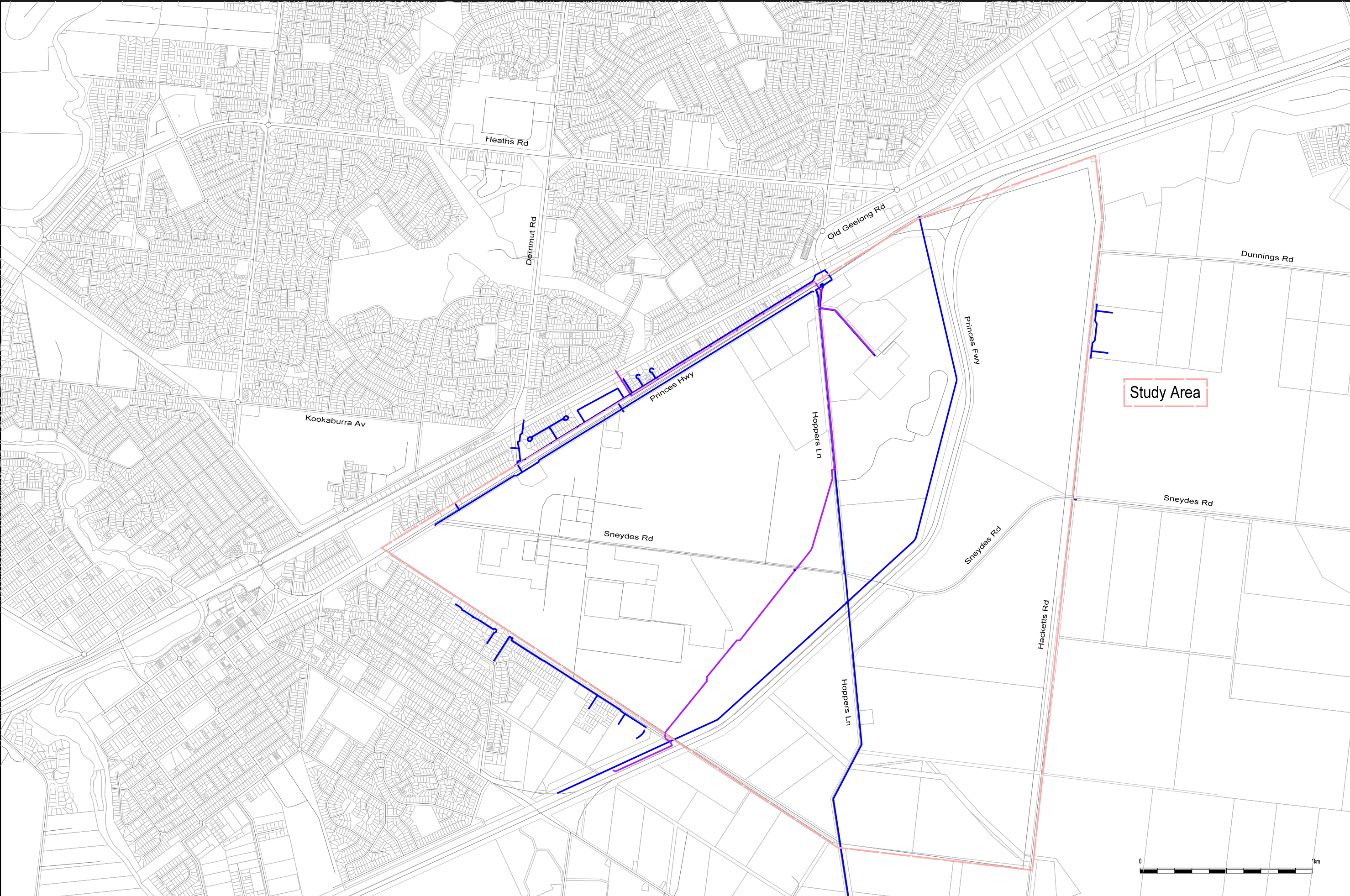
<div>ARUP</div> <div>Level 17 1 Nicholson Street, Melbourne. Telephone (03) 9668 5500 Fax. (03) 9663 1546</div>	PROJECT	DRAWN	LP	Scale 1:20000 @ A3
	Werribee Employment Precinct	CHECKED	MB	DATE 18/06/2009
	TITLE	JOB No	206205	DRG No CS01
	Summary of Primary Infrastructure Services			



LEGEND

- City West Water Sewer (size and type varies)
- Heritage Listed Main Outfall Sewer
- Melbourne Water Western Trunk Sewer (4500 dia)
- Melbourne Water Sewerage Pump Station

<div>ARUP</div> <div>Level 17 1 Nicholson Street, Melbourne. Telephone (03) 9668 5500 Fax. (03) 9663 1546</div>	PROJECT		DRAWN	LP	Scale 1:20000 @ A3
	Werribee Employment Precinct		CHECKED	MB	DATE 18/06/2009
	TITLE		JOB No	206205	DRG No CS02
Sewer Infrastructure					

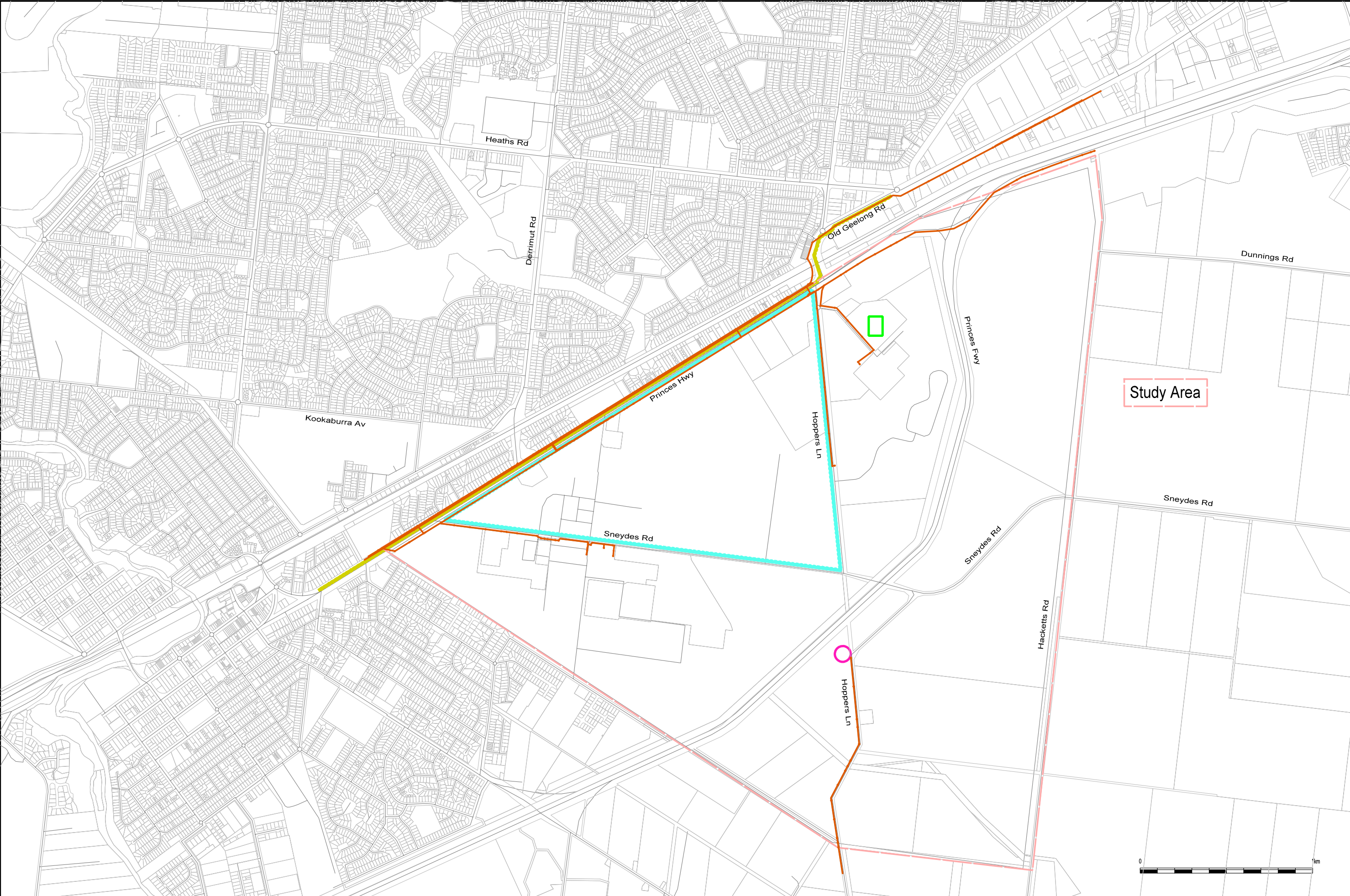


LEGEND

City West Water Potable Water (Size 150mm - 300mm type Varies)

City West Water Recycled Water (225mm MPVC)

<div>ARUP</div> <div>Level 17 1 Nicholson Street, Melbourne. Telephone (03) 9668 5500 Fax. (03) 9663 1546</div>	PROJECT Werribee Employment Precinct		DRAWN LP	Scale 1:20000 @ A3
	TITLE Potable & Recycled Water Infrastructure		CHECKED MB	DATE 18/06/2009
			JOB No 206205	DRG No CS03

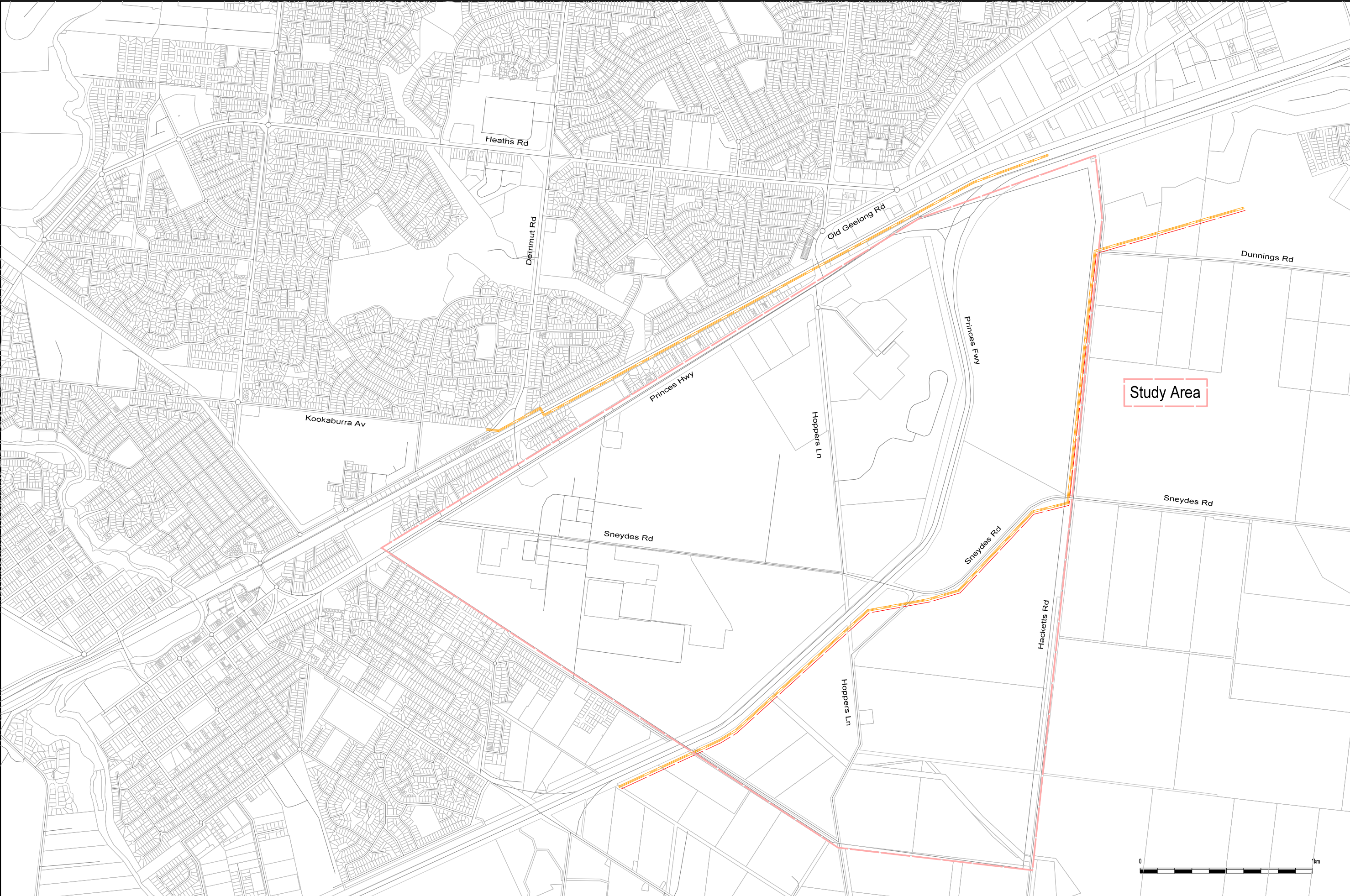


LEGEND

- Optus Optic Fibre Cable
- VerNet Optic Fibre Cable
- Telstra Trunk Infrastructure

- Telstra Telecommunications Tower
- Community Radio Station & Towers

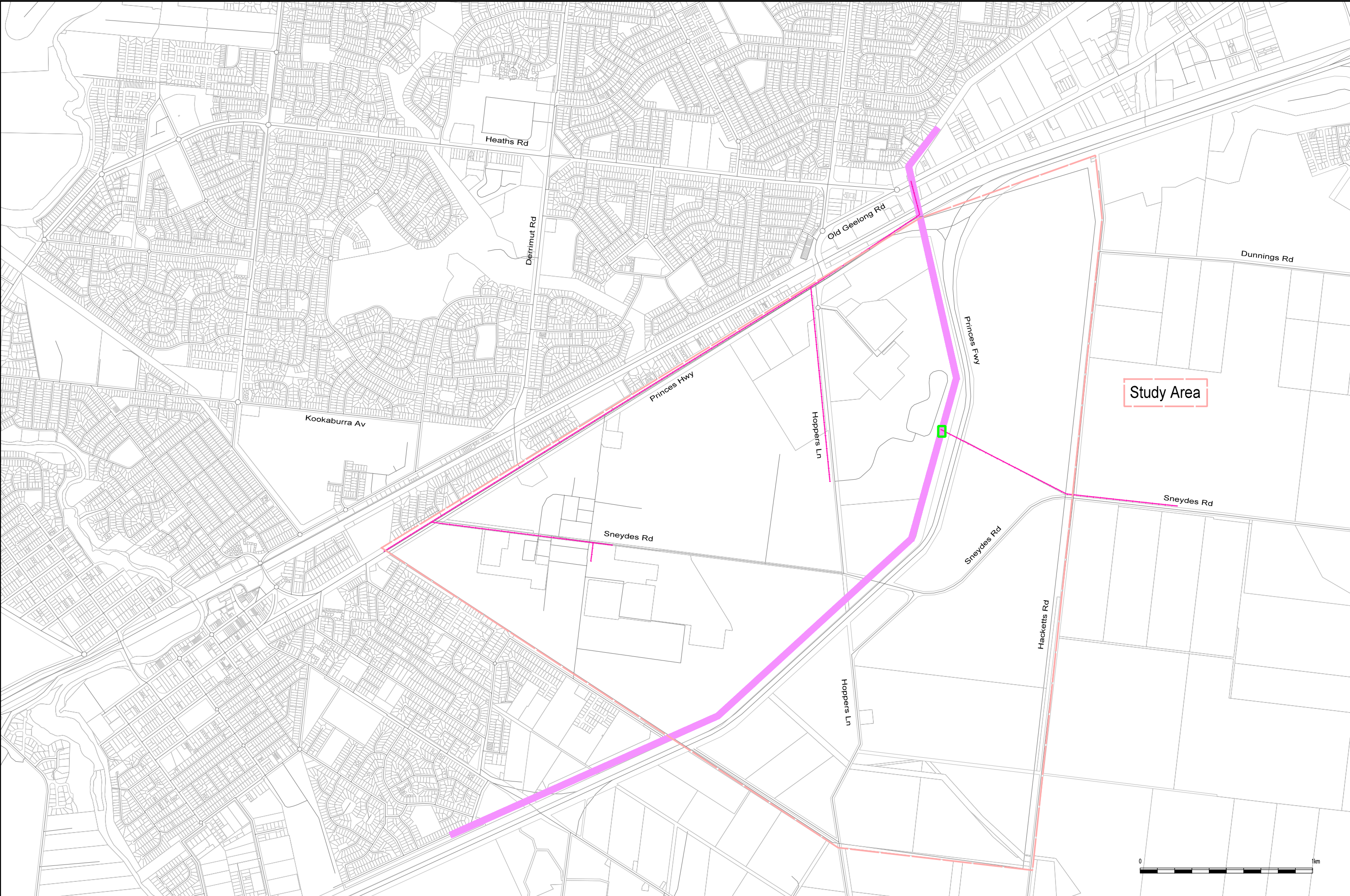
<div>ARUP</div> <div>Level 17 1 Nicholson Street, Melbourne. Telephone (03) 9668 5500 Fax. (03) 9663 1546</div>	PROJECT Werribee Employment Precinct		DRAWN LP	Scale 1:20000 @ A3
	TITLE Telecommunications Infrastructure		CHECKED MB	DATE 18/06/2009
			JOB No 206205	DRG No CS04



LEGEND

- Shell Oil Pipeline 8" WOPL (White Oil Pipeline)
- Shell Oil Pipeline 16" ALT-GEE (Altona - Geelong)

<div>ARUP</div> <div>Level 17 1 Nicholson Street, Melbourne. Telephone (03) 9668 5500 Fax. (03) 9663 1546</div>	PROJECT Werribee Employment Precinct		DRAWN LP	Scale 1:20000 @ A3
	TITLE Shell Oil Infrastructre		CHECKED MB	DATE 18/06/2009
			JOB No 206205	DRG No CS05

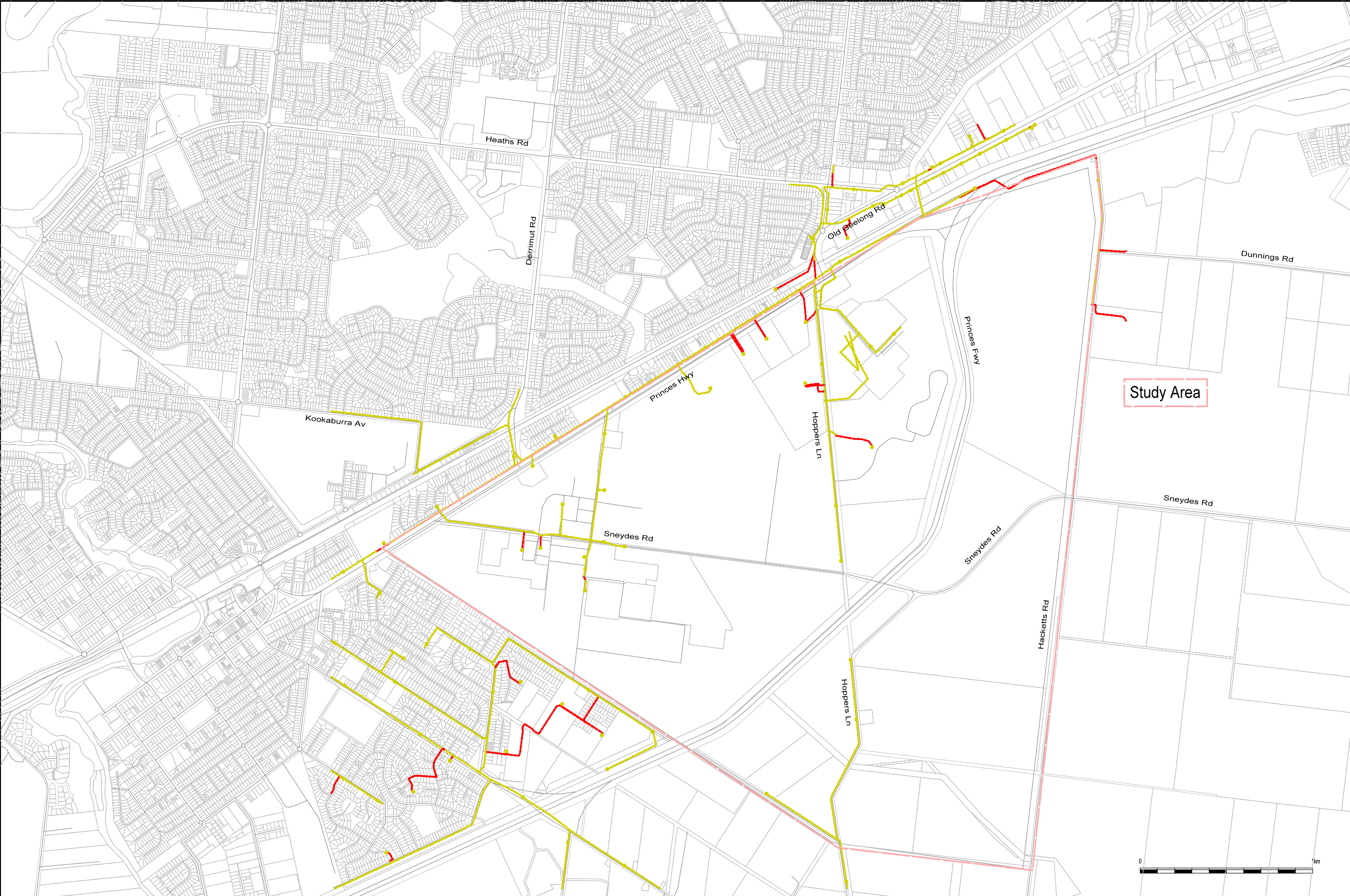


LEGEND




- Tenix Gas
- APAGasNet


Werribee City Gate (Old Sneydes Rd City Gate)

<div>ARUP</div> <div>Level 17 1 Nicholson Street, Melbourne. Telephone (03) 9668 5500 Fax. (03) 9663 1546</div>	PROJECT Werribee Employment Precinct		DRAWN LP	Scale 1:20000 @ A3
	TITLE Gas Infrastructure		CHECKED MB	DATE 18/06/2009
			JOB No 206205	DRG No CS06



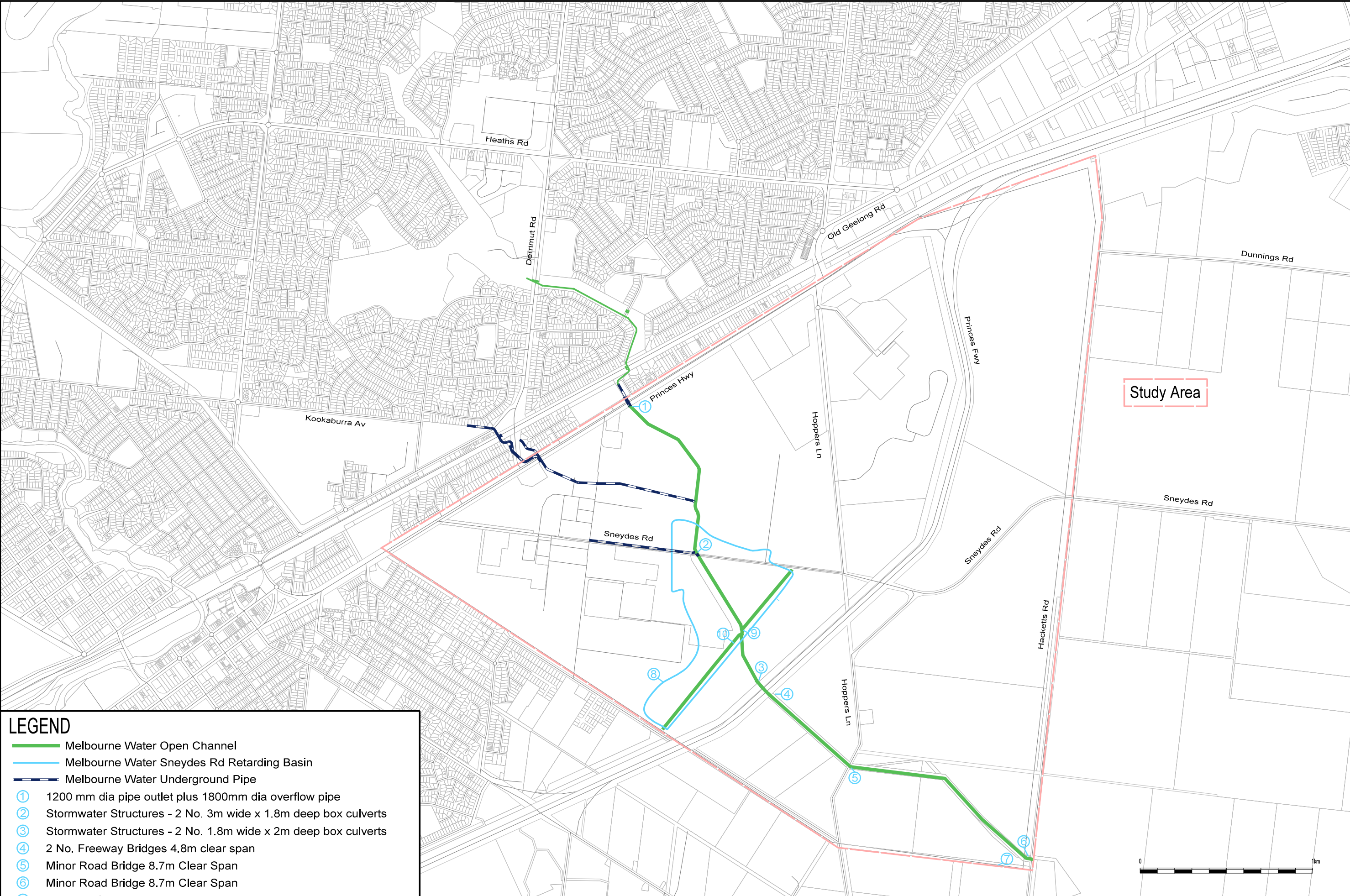
LEGEND

-  PowerCor Electric Overhead 22kV and 66kV
-  PowerCor Electric Underground 22kV
-  PowerCor Pole/Ground Mounted Sub-stations



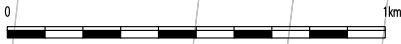
Level 17
1 Nicholson Street, Melbourne.
Telephone (03) 9668 5500 Fax. (03) 9663 1546

PROJECT	Werribee Employment Precinct	
TITLE	Electricity Infrastructure	
DRAWN	LP	Scale 1:20000 @ A3
CHECKED	MB	DATE 16/06/2009
JOB No	206205	DRG No CS07



LEGEND

- Melbourne Water Open Channel
- Melbourne Water Sneydes Rd Retarding Basin
- Melbourne Water Underground Pipe
- ① 1200 mm dia pipe outlet plus 1800mm dia overflow pipe
- ② Stormwater Structures - 2 No. 3m wide x 1.8m deep box culverts
- ③ Stormwater Structures - 2 No. 1.8m wide x 2m deep box culverts
- ④ 2 No. Freeway Bridges 4.8m clear span
- ⑤ Minor Road Bridge 8.7m Clear Span
- ⑥ Minor Road Bridge 8.7m Clear Span
- ⑦ Irrigation Channel
- ⑧ Melbourne Water Sneydes Rd Retarding Basin
- ⑨ Syphon System 2 No. 1800mm dia pipes
- ⑩ 30m wide Floodway Weir



<div>ARUP</div> <div>Level 17 1 Nicholson Street, Melbourne. Telephone (03) 9668 5500 Fax. (03) 9663 1546</div>	PROJECT Werribee Employment Precinct		DRAWN LP	Scale 1:20000 @ A3
	TITLE Stormwater Infrastructure		CHECKED MB	DATE 18/06/2009
			JOB No 206205	DRG No CS08